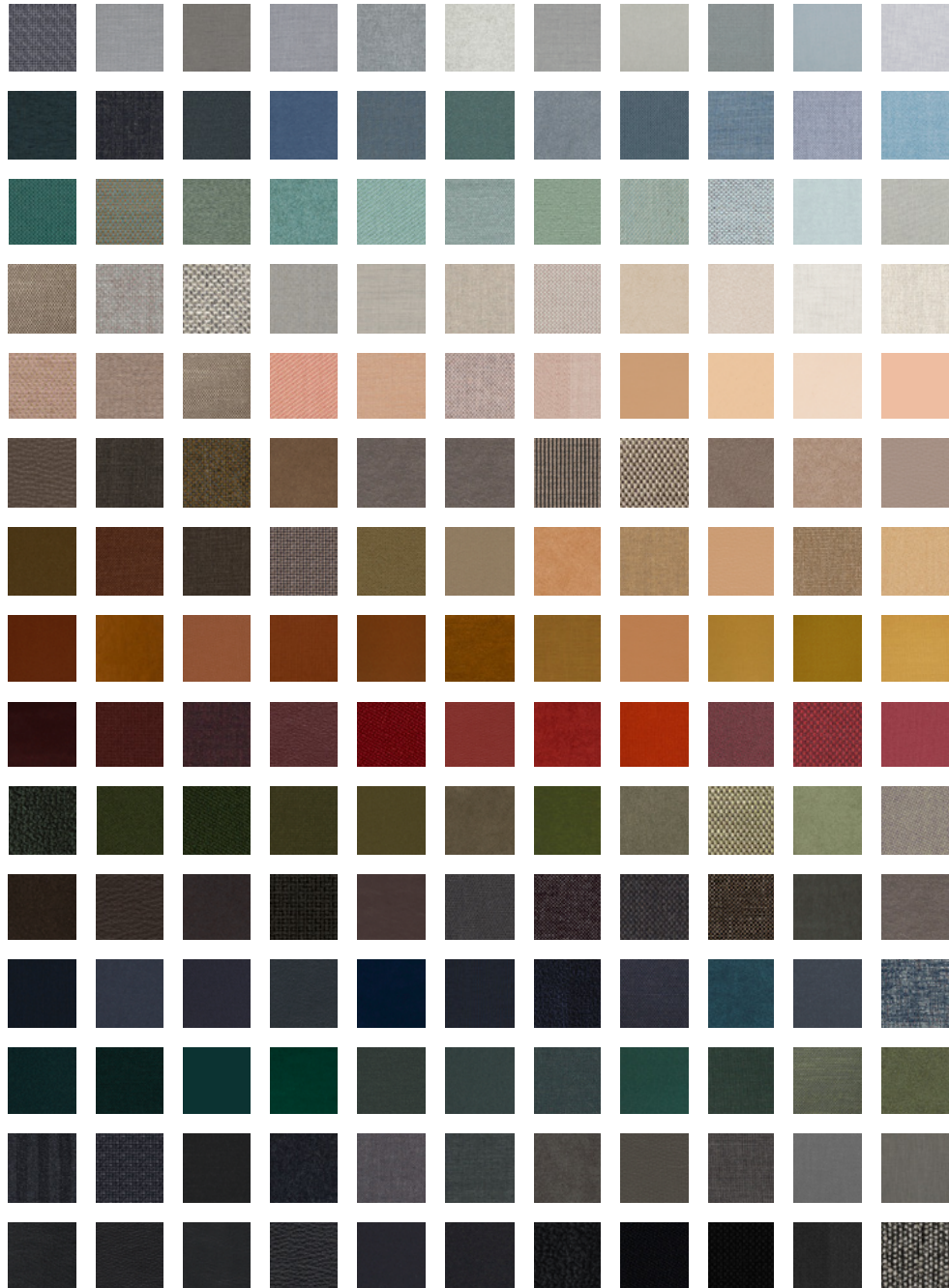


Fredericia Colour Worlds

Upholstery & Surfaces



Fredericia

1 9 1 1

6 — Colour Worlds

- 6 — Ancient Green
- 8 — Camel
- 10 — Charcoal
- 12 — Clay
- 14 — Cognac
- 16 — Cold Grey
- 18 — Dark Brown
- 20 — Deep Red
- 22 — Dusty Blue
- 24 — Jet Black
- 26 — Light Sand
- 28 — Navy Blue
- 30 — Ocean
- 32 — Olive

34 — Fredericia Leather

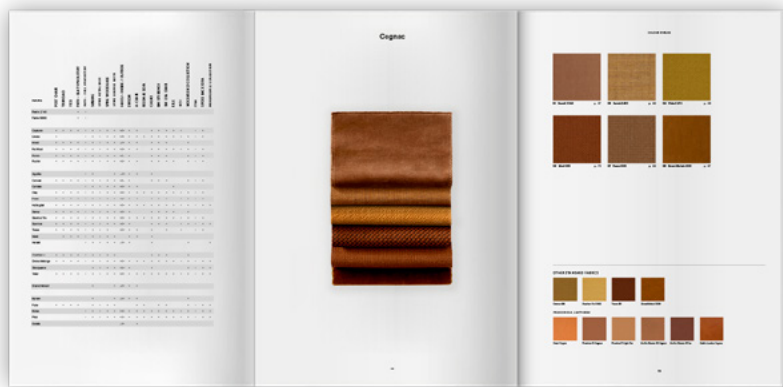
42 — Fabrics

- 42 — Slender Wool Fabrics
- 48 — Full-bodied Wool Fabrics
- 54 — Linen and Soft Unions
- 60 — Bouclé
- 64 — Velvet
- 70 — Technical Fabrics

74 — Additional Materials

- 74 — Wood
- 80 — Stone
- 82 — Metal
- 86 — Laminate
- 88 — Webbing & Wicker
- 90 — Canvas
- 94 — Cane webbing

96 — Standard Colours



How to use the Catalogue:

Inside you'll find an index that shows the optimal options between furniture and fabrics.

Mix-and-match



Colour Worlds is Fredericia's material library and mix-and-match tool for interior designers. It not only showcases our collection of standard fabrics and leathers, it also offers an intuitive coordination between textile, leather, colour and surface options.

Starting with a colour scale, enjoy a variety of leathers, fabrics, textures and surface sensations to create any type of interior from discrete to dynamic. With the freedom to choose subtle, muted tones or a mix of tones across the colour spectrum. In line with Fredericia's design philosophy, the Colour Worlds are created with a strong focus on tactility and natural beauty. A universe of options that are as pleasing to the eye as to the touch, able to enhance the atmosphere of any space.

Fredericia Colour Worlds feature our standard selection, not a fixed set of options. We continue to offer a broad range of graded-in fabrics, and deliver bespoke upholstery for projects and special application demands.

Ancient Green

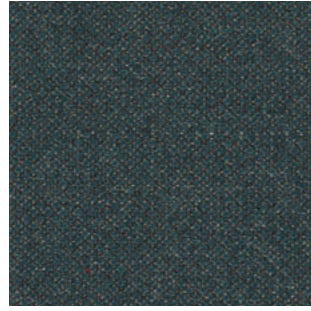




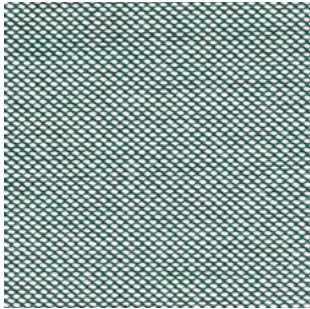
01 Mood 5105 p. 54



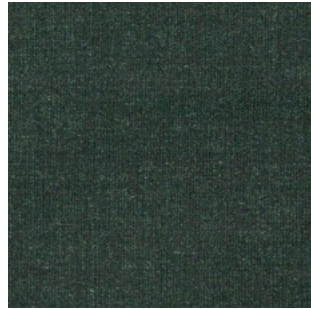
02 Harald 3 982 p. 67



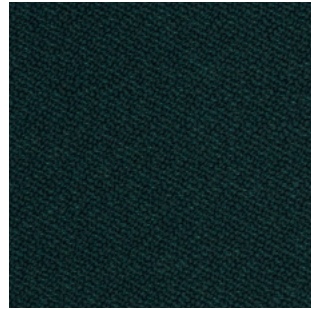
03 Fiord 991 p. 45



04 Steelcut Trio 3 916 p. 52

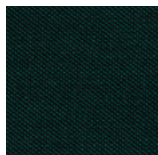


05 Remix 2 973 p. 46

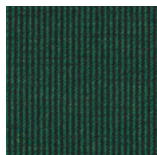


06 Vidar 3 1062 p. 53

OTHER STANDARD FABRICS



Steelcut Trio 3 996



Fuse 981

STANDARD COLOURS



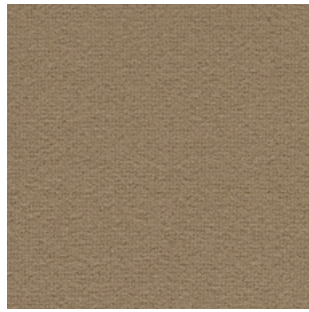
Ancient Green

Camel

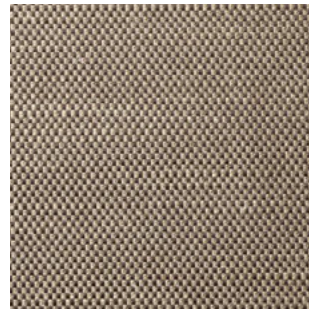




01 Vidar 3 333 p. 53



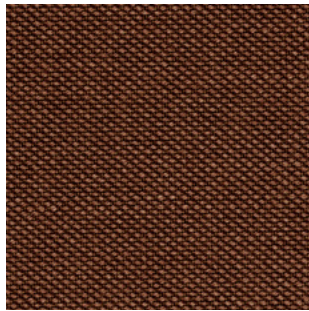
02 Tonus 4 244 p. 53



03 Sinequanon 37 p. 58



04 Remix 2 252 p. 46

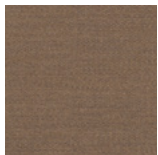


05 Steelcut Trio 3 235 p. 52



06 Comfort+ 9084 p. 71

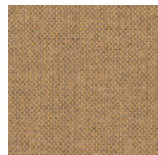
OTHER STANDARD FABRICS



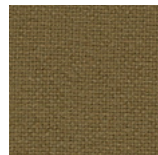
Mood 4104



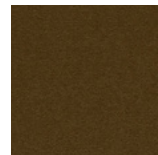
Grand Mohair 2001



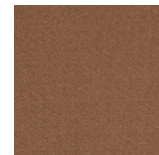
Re-wool 358



Hallingdal 65 224

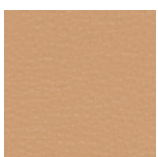


Tonus 4 364

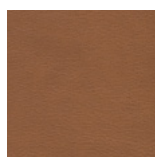


Vidar 3 353

FREDERICIA LEATHERS



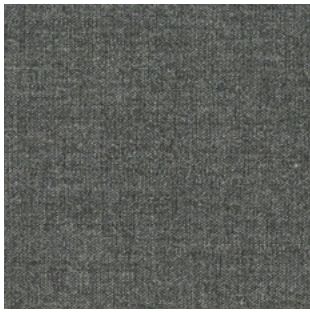
Premium 70 Beige



Aniline Nature 91 Nutshell

Charcoal





01 **Remix 2 163** p. 46



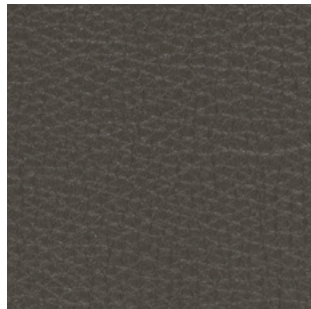
02 **Sunniva 2 1079** p. 58



03 **Divina Melange 3 180** p. 50



04 **Nubuck Velvet 506 Black** p. 39

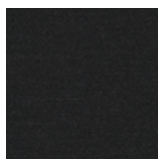


05 **Leather Premium 74
Umbra Grey** p. 37

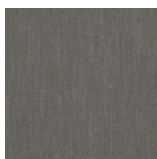


06 **Hallingdal 65 180** p. 51

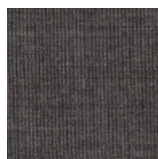
OTHER STANDARD FABRICS



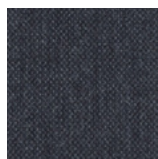
Mood 2104



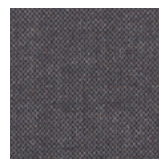
Ruskin 34



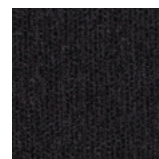
Canvas 154



Fiord 191



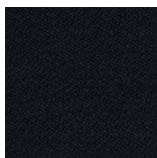
Re-wool 198



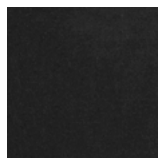
Savanna 192



Comfort+ 0049



Vidar 3 182



Harald 3 283

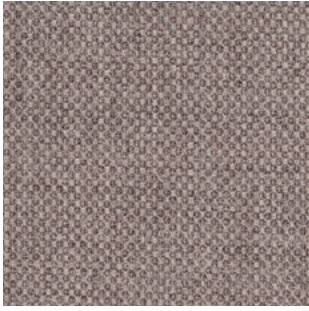
STANDARD COLOURS



Dark Grey

Clay

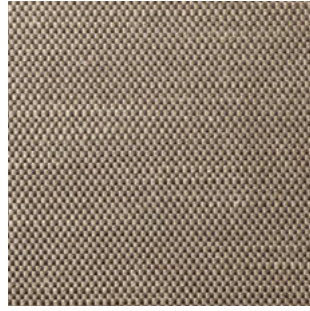




01 Fiord 271 p. 45



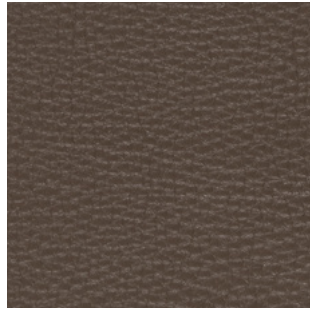
03 Nubuck Velvet 502 Warm Grey p. 39



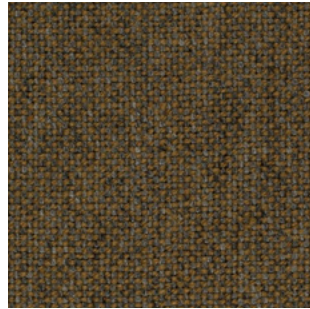
04 Sinequanon 25 p. 58



05 Byram 361 p. 66



07 Leather Premium 73 Dark Clay p. 37



08 Hallingdal 65 227 p. 51

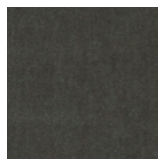
OTHER STANDARD FABRICS



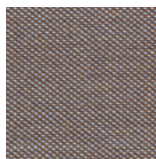
Remix 2 133



Ruskin 33



Harald 3 242



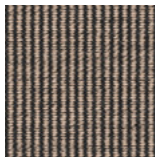
Steelcut Trio 3 376



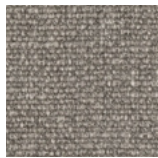
Comfort+ 0005



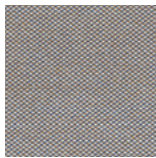
Agulia 210



Fuse 351



Tosca 7

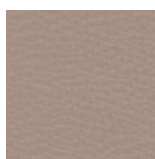


Steelcut Trio 3 266

OTHER FREDERICIA LEATHERS



Omni Dark Clay



Premium 77 Warm Grey



Nubuck Velvet 503 Clay

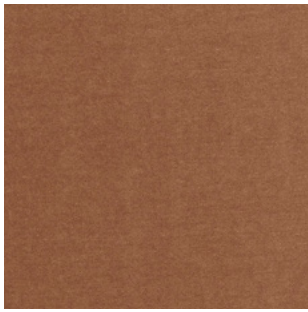
STANDARD COLOURS



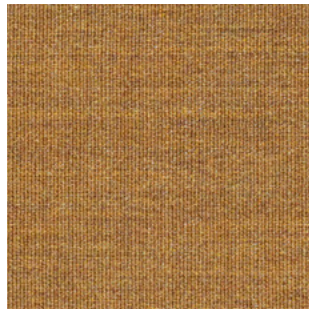
Quartz Grey

Cognac

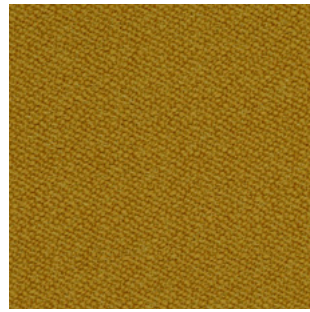




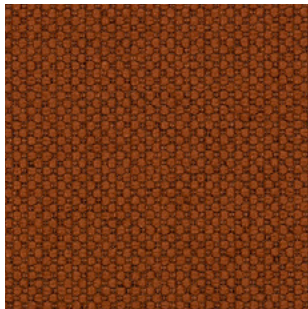
01 Harald 3 343 p. 67



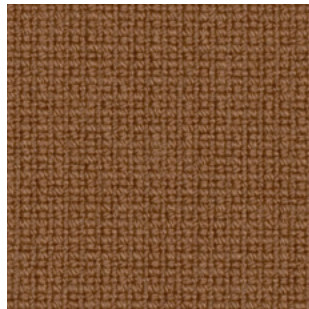
03 Remix 2 433 p. 46



04 Vidar 3 472 p. 53



06 Merit 033 p. 72

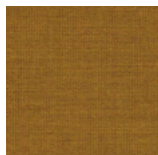


07 Fame 61131 p. 45

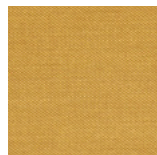


08 Grand Mohair 2103 p. 67

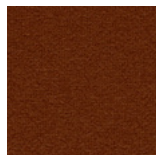
OTHER STANDARD FABRICS



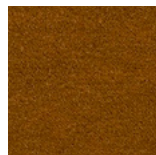
Canvas 424



Steelcut Trio 3 466



Tonus 474

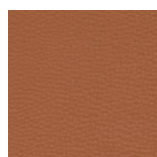


Grand Mohair 2600

FREDERICIA LEATHERS



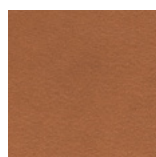
Omni Cognac



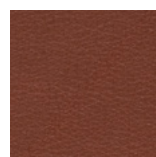
Premium 75 Cognac



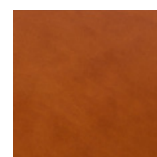
Premium 71 Light Tan



Aniline Nature 95 Cognac



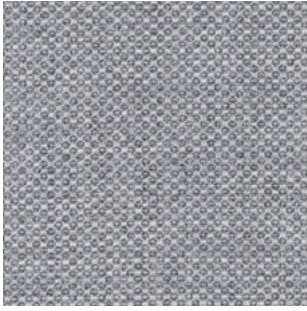
Aniline Nature 92 Tan



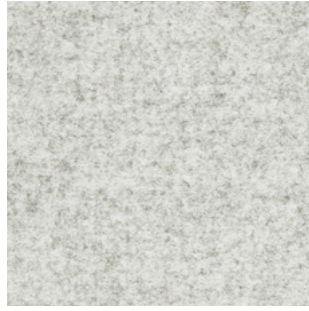
Saddle Leather Cognac

Cold Grey

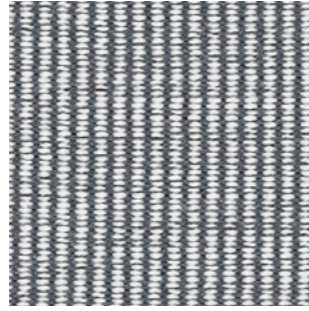




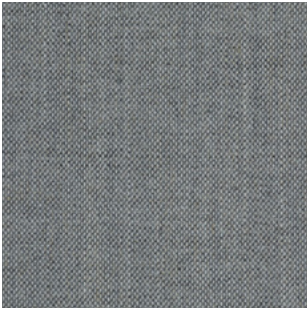
01 Fiord 151 p. 45



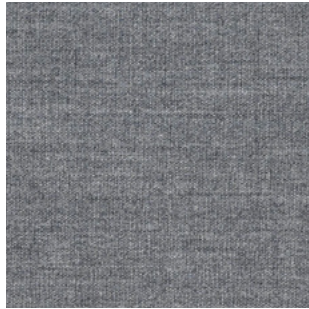
04 Divina Melange 3 120 p. 50



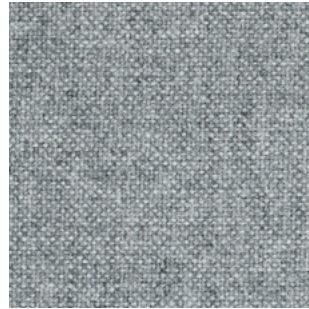
05 Fuse 131 p. 50



06 Sunniva 2 242 p. 58



07 Remix 2 143 p. 46

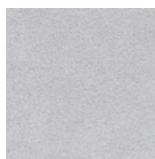


08 Hallingdal 65 130 p. 51

OTHER STANDARD FABRICS



Tonus 4 216



Comfort+ 1161



Steelcut Trio 3 113



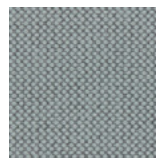
Mood 1102



Canvas 124

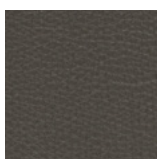


Ruskin 16



Merit 16

FREDERICIA LEATHERS



Premium 74 Umbra Grey

STANDARD COLOURS



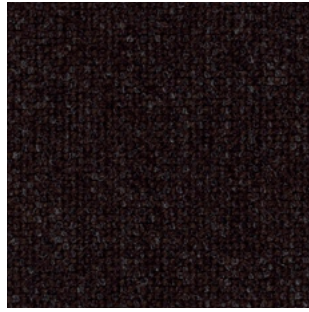
Stone

Dark Brown

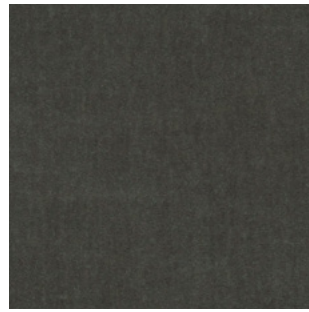




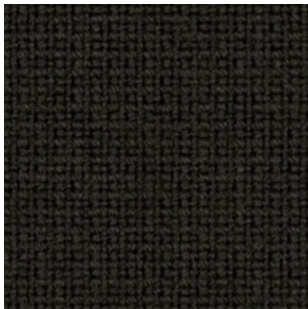
01 Leather Premium 86-1 p. 37
Dark Brown



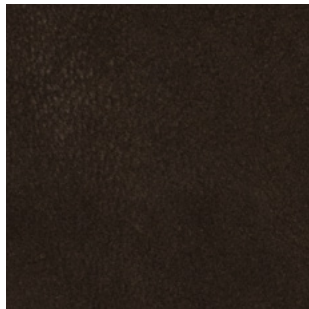
02 Hallingdal 65 376 p. 51



04 Byram 191 p. 66



05 Fame 61134 p. 45

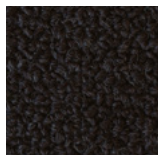


06 Nubuck Velvet 504 p. 39
Dark Brown



07 Fiord 391 p. 45

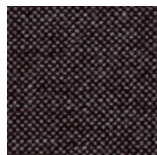
OTHER STANDARD FABRICS



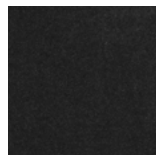
Carlotto 400



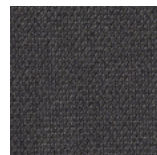
Remix 2 393



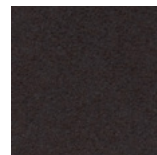
Hallingdal 65 368



Harald 3 283

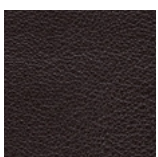


Steelcut Trio 3 383

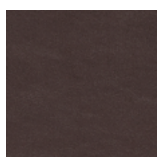


Comfort+ 61013

OTHER FREDERICIA LEATHERS



Soft 36 Dark Brown



Aniline Nature 96 Dark Brown

Deep Red

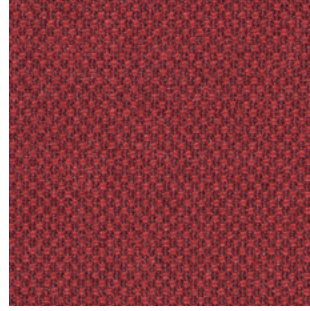




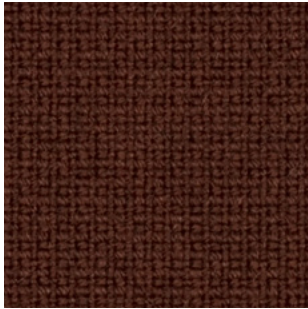
01 Remix 2 373 p. 46



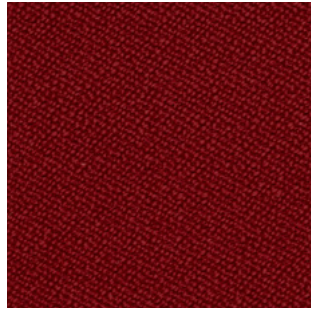
03 Aniline Nature 93 Indian red p. 38



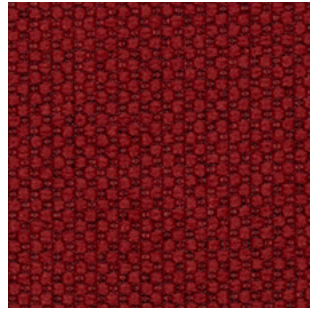
03 Fiord 581 p. 45



06 Fame 61047 p. 45

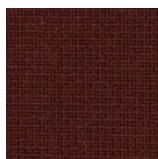


07 Vidar 2 572 p. 53

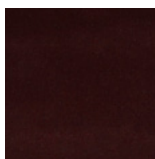


08 Merit 039 p. 72

OTHER STANDARD FABRICS



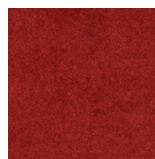
Fame 64167



Harald 3 382

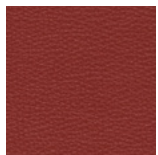


Tonus 207



Comfort+ 1153

OTHER FREDERICIA LEATHERS



Premium 84 Dark Red



Omni Burnt Sienna

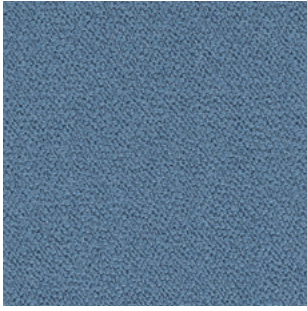
STANDARD COLOURS



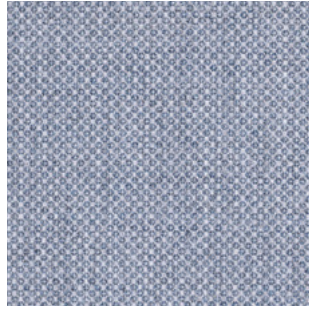
Dark Red

Dusty Blue

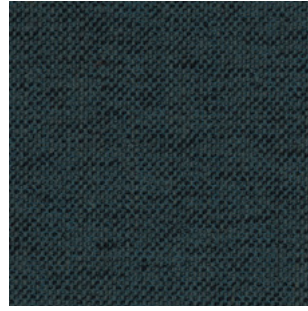




01 Vidar 3 733 p. 53



02 Fiord 751 p. 46



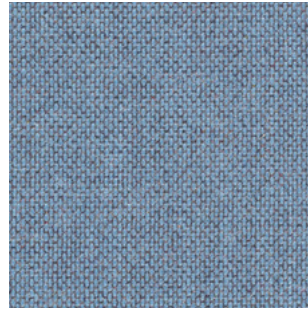
04 Sunniva 2 172 p. 58



05 Tonus 4 615 p. 53



06 Comfort+ 1160 p. 72



07 Re-wool 768 p. 46

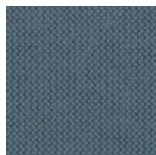
OTHER STANDARD FABRICS



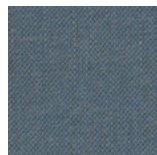
Mood 2107



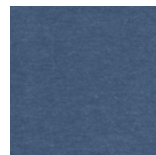
Remix 2 733



Merit 12



Sunniva 2 752



Byram 171

STANDARD COLOURS



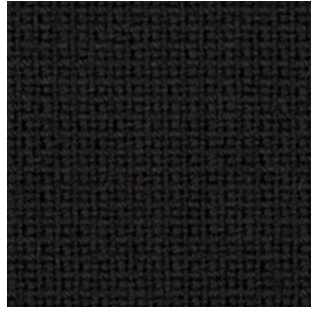
Storm

Jet Black

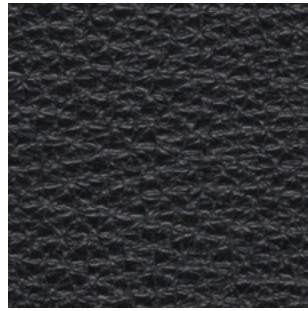




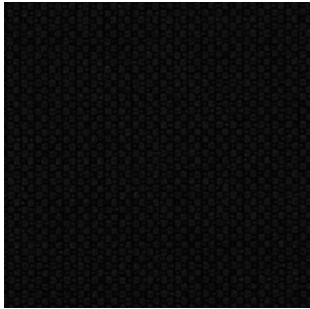
02 Harald 192 p. 67



03 Fame 60999 p. 45



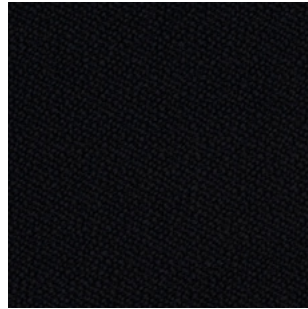
05 Leather Robust 58 p. 36



06 Merit 04 p. 72

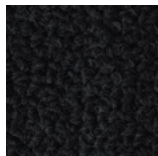


07 Byram 191 p. 66

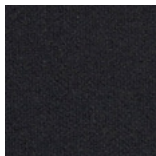


08 Vidar 2 1880 p. 53

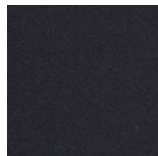
OTHER STANDARD FABRICS



Carlotto 110

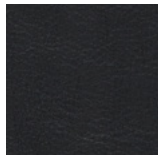


Tonus 128

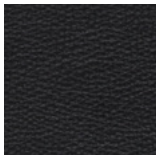


Divina 3 191

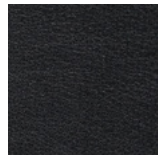
OTHER FREDERICIA LEATHERS



Soft 38 Black

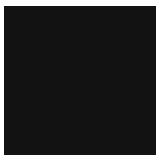


Premium 88 Black



Aniline Nature 98 Black

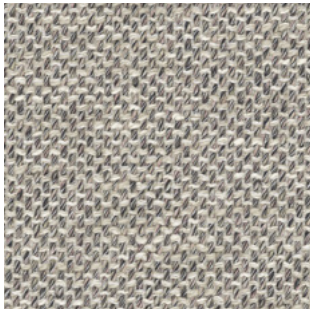
STANDARD COLOURS



Black

Light Sand





01 Aguilá 201 p. 56



02 Leather Premium 72 Sand p. 37



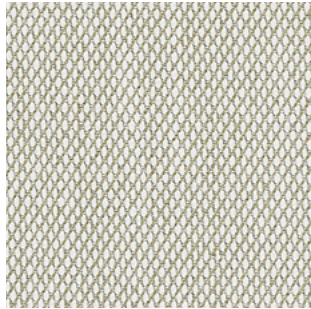
03 Ruskin 10 p. 57



04 Tonus 4 135 p. 53



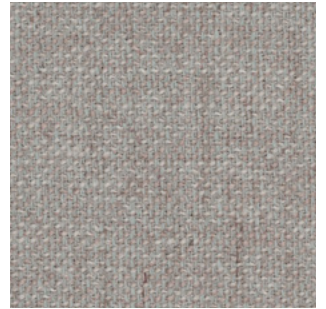
05 Carlotto 200 p. 62



06 Steelcut Trio 3 213 p. 52



07 Nubuck Velvet 501 Sand p. 39



08 Sunniva 2 717 p. 58

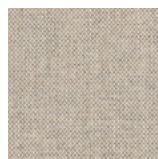
OTHER STANDARD FABRICS



Maple 222



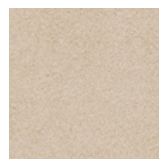
Sinequanon 1



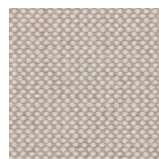
Re-wool 218



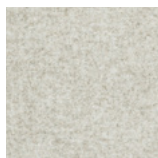
Hallingdal 65 110



Comfort+ 61002



Merit 29



Divina Melange 220



Canvas 114



Rime 111

STANDARD COLOURS



Sand

Navy Blue

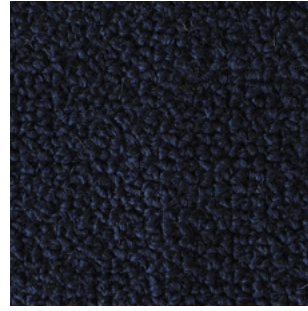




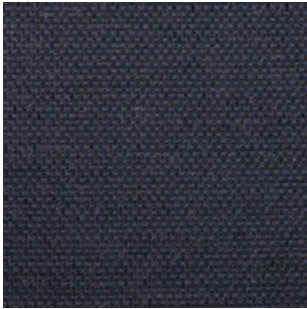
01 Vidar 3 554 p. 53



03 Steelcut Trio 3 195 p. 56



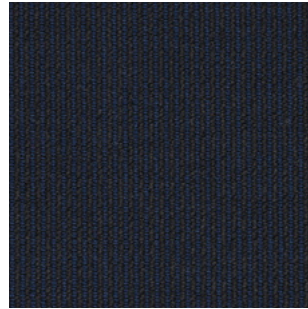
04 Carlotto 800 p. 62



05 Sinequanon 13 p. 58

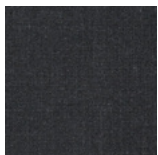


06 Harald 3 792 p. 67

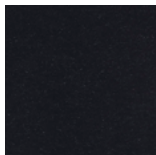


08 Fuse 191 p. 50

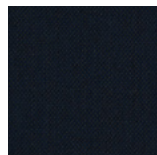
OTHER STANDARD FABRICS



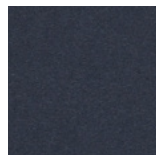
Remix 2 183



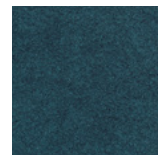
Byram 791



Sunniva 2 192



Divina 3 793



Comfort+ 9075

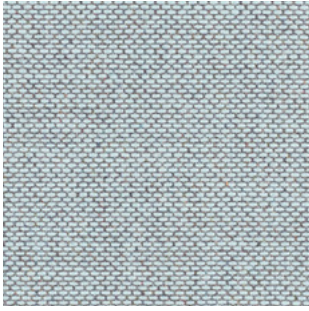
STANDARD COLOURS



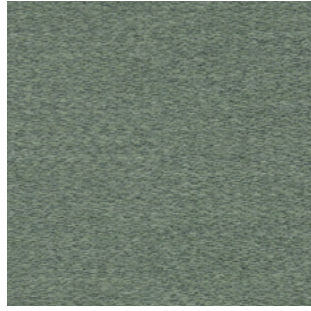
Dark Blue

Ocean

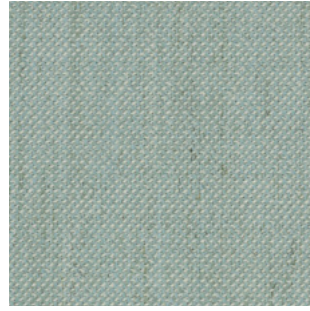




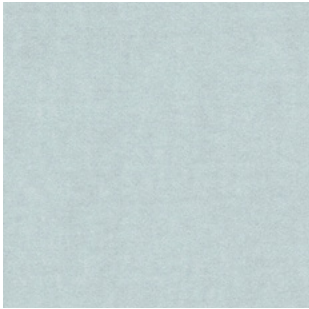
01 Re-wool 828 p. 46



02 Mood 4106 p. 51



03 Sunniva 2 132 p. 58



05 Harald 3 823 p. 67

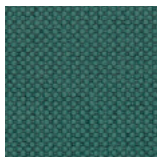


06 Sinequanon 21 p. 58



04 Tonus 4 914 p. 53

OTHER STANDARD FABRICS



Merit 17



Ruskin 16

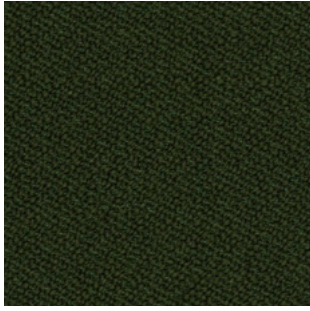
STANDARD COLOURS



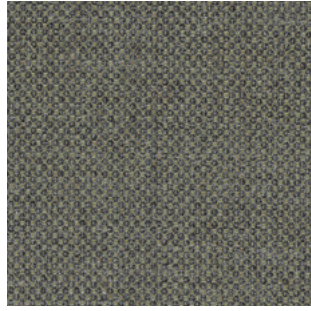
Ocean

Olive

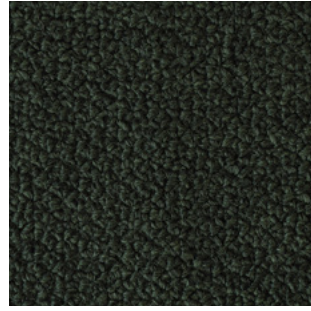




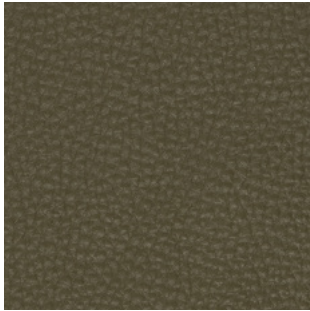
01 Vidar 3 972 p. 53



02 Fiord 961 p. 45



04 Carlotto 900 p. 62



05 Leather Premium 76 Olive p. 62

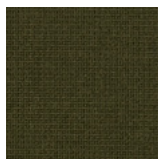


07 Grand Mohair 9103 p. 67

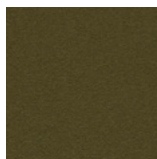


08 Tonus 4 131 p. 53

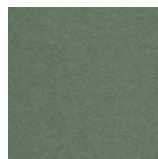
OTHER STANDARD FABRICS



Fame 68148



Tonus 4 974



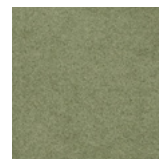
Divina 944



Cobblestone 10



Byram 981



Comfort+ 8397

OTHER FREDERICIA LEATHERS



Nubuck Velvet 512 Olive

STANDARD COLOURS

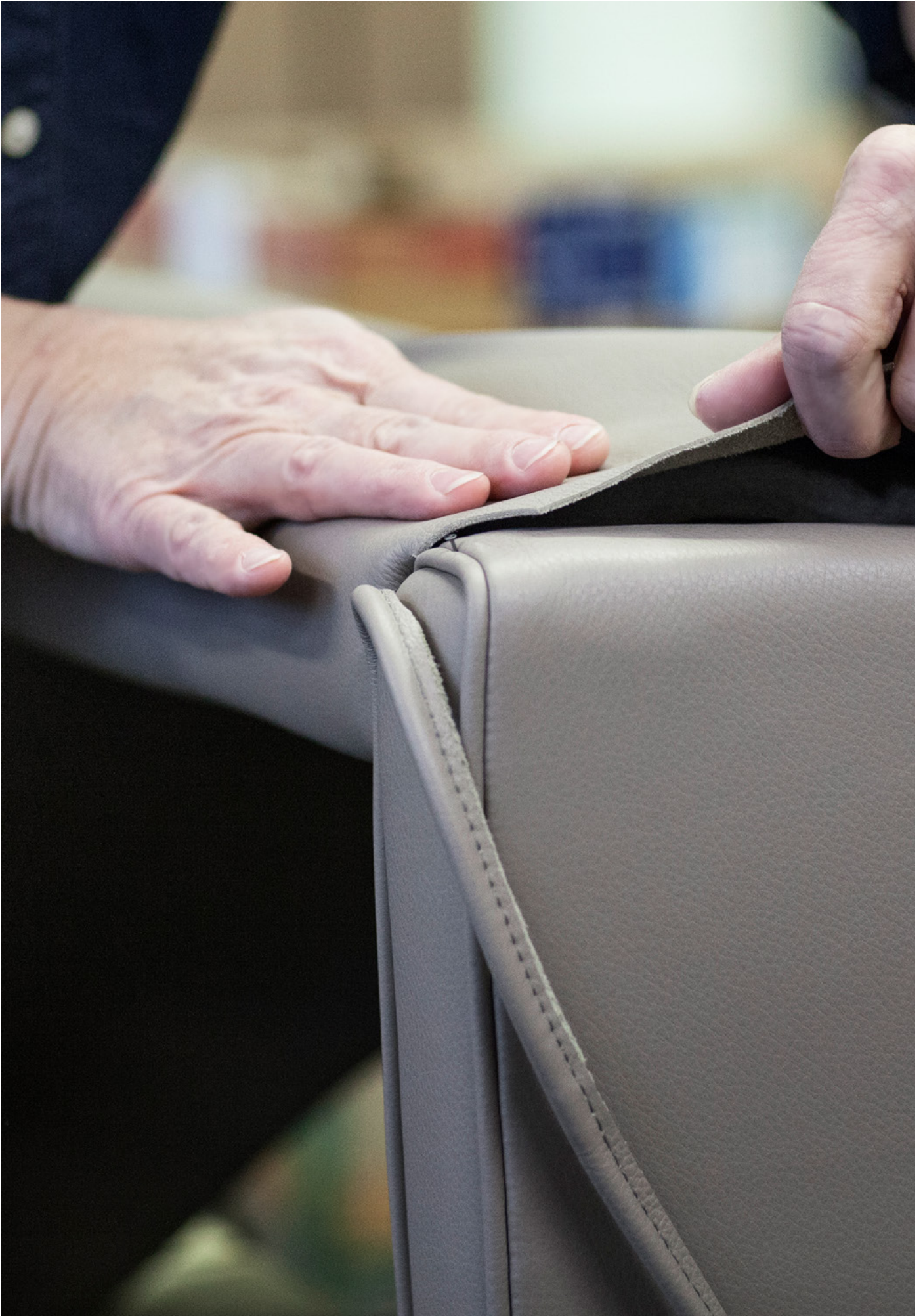


Quartz Grey

Fredericia Leather

Our Fredericia Leather collection is a curated selection of leathers chosen primarily for their exceptional high quality. From surface finish to colour range, the leathers are fine-tuned to complement the Fredericia product range, both visually and in terms of material tactility.

All leathers are free of allergenic substances. Each of our partner tanneries is monitored and supervised to ensure that they comply with ethical and environmental regulations, as well as high standards of quality.



LEATHER ROBUST

Leather Group 0



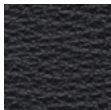
About Pigmented furniture leather made from European bull hides with a distinct grain structure. After being dyed, the leather is covered with a protective layer. With its heavy grain structure and solid feel, Leather Robust has a strong character. It is very resilient and easy to clean making it suitable for hardwearing public environments. Reduced breathability. Chrome tanned in Italy.

Thickness 1,4 – 1,6 mm

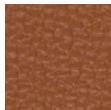
Light fastness >5

Environment Blauer Engel Ecolabel

Total no of colours 2



58
Black



51
Cognac

LEATHER SOFT

Leather Group 0



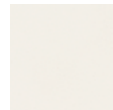
About A regular flat grain semi-aniline leather made from European cowhides. The leather is treated with colour pigment and a light protective layer that keeps a soft and comfortable touch with moderate breathability. Leather Soft is a durable leather protected against most stains with great light fastness. Suitable for flat upholstery in a wide range of applications. Chrome-free tanned in Italy.

Thickness 1,1 – 1,3 mm

Light fastness >6

Environment Bio-degradeable leather

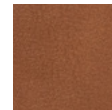
Total no of colours 8



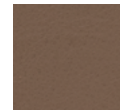
31
Shell



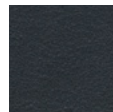
30
Cashew



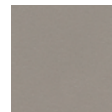
35
Cognac



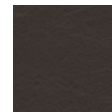
33
Clay



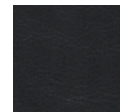
32
Dark Blue



37
Grey



36
Dark Brown



38
Black

LEATHER OMNI

Leather Group 0



About

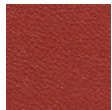
Semi-aniline Omni is a beautiful semi-aniline leather made from the best Scandinavian bull hides. The full-grain surface has a harmonious structure and provides a pleasant and comfortable touch with moderate breathability. The leather has a delicate pigmentation, which makes it is very user friendly and hardwearing with good protection against dirt and light. Omni can be used across all Fredericia products from chair seats to statement sofas. Chrome tanned in Italy.

Thickness 1.2/1.4 mm

Lightfastness >5

Environment Blauer Engel Ecolabel

Total no of colours 6



293
Burnt sienna



307
Cognac



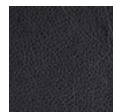
377
Dark Borwn



320
Dark clay



112
Warm grey



301
Black

LEATHER PREMIUM

Leather Group 1



About

A state of the art full-grain semi-aniline leather made from the best Scandinavian bull hides. Thanks to a delicate and precise protective layer, Leather Premium retains a comfortable touch with excellent breathability. The leather is user-friendly and hardwearing with protection against dirt and light. This article was originally developed for Fredericia's Mogensen 22 Collection, but it is suitable for all leather furniture. Chrome tanned in Italy.

Thickness 1,5 – 1,7 mm

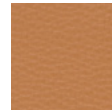
Light fastness >5

Environment Blauer Engel Ecolabel

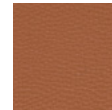
Total no of colours 12



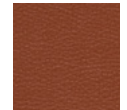
70
Beige



71
Light Tan



75
Cognac



82
Tan



72
Sand



77
Warm Grey



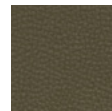
73
Dark Clay



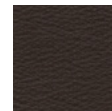
84
Dark Red



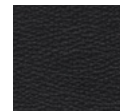
74
Umbra Grey



76
Olive



86-1
Dark Brown



88
Black

ANILINE NATURE

Leather Group 2



About

This luxurious full-grain aniline leather has a pleasant touch and a natural open-pored texture. The leather is highly breathable and comfortable with a smooth, natural surface and tight structure. Aniline Nature is made from top selection Scandinavian bull hides with discrete visible marks of animal life. With no protective layer, Aniline Nature is sensitive in use and will acquire a patina over time. Chrome then vegetable tanned in Italy.

Thickness	1,2 – 1,4 mm
Light fastness	>4
Environment	Blauer Engel Ecolabel
Total no of colours	6



VEGETAL NATURE

Leather Group 3



About

A pure, uncoloured aniline leather with a refined touch. This leather is produced from the top selection of Scandinavian bull hides. Discrete marks of animal life demonstrate the material's authentic origin. Vegetal Nature has a natural open-pored texture, making the leather highly breathable. With no protective layer, Vegetal Nature is sensitive in use. This leather quickly acquires a unique patina and darkens over time. Fully vegetable tanned in Italy.

Thickness	1,2 – 1,4 mm
Light fastness	>3
Environment	Blauer Engel Ecolabel
Total no of colours	1



NUBUCK VELVET

Leather Group 3



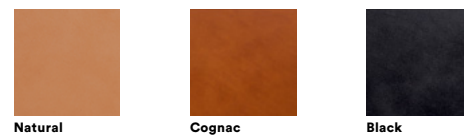
About	Nubuck Velvet is a nubuck leather with a warm and charming look made from the finest European bull hides. A full-grain aniline hide has been lightly sanded to obtain a matt effect. The velvety soft touch of this nubuck leather is unparalleled by any other articles. Nubuck Velvet is Scotchguard protected during the tanning process, while the surface remains sensible in use. Chrome tanned in Italy.
Thickness	1,2 – 1,4 mm
Light fastness	>4
Environment	Blauer Engel Ecolabel
Total no of colours	8



SADDLE LEATHER



About	Saddle leather of the highest calibre made from first selection Swedish bull hides. Sensitive to light. Grown, dyed, finished and tailored in Sweden. Fully vegetable tanned.
Light fastness	>3
Environment	Organic Content Certified
Total no of colours	3





The Spanish Chair by Børge Mogensen.
Leather: Saddle Leather, Natural. Wood: Soaped Oak



Slender Wool Fabrics

The group of slender wool fabrics are perfect for sleek shapes and relatively easy to clean. The natural properties of wool intrinsic to this group boast an amazing array of features. Wool is naturally flame retardant and soil resistant. It is very comfortable because it absorbs humidity without causing it to feel moist. It also tempers the body.

CANVAS, FAME, FIORD, REMIX, CAPTURE, RE-WOOL

Calmo 1-Seater by Hugo Passos.
Fabric: Fiord, 391.



CANVAS

Fabric Group 2

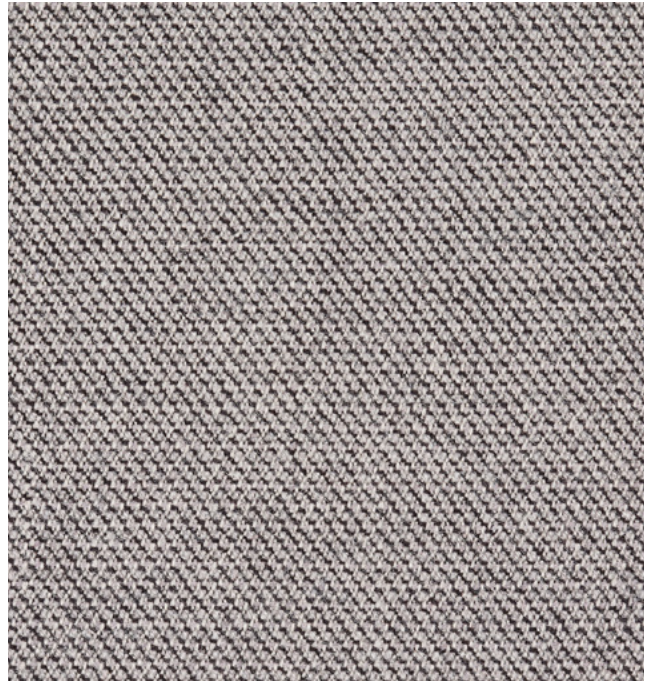


About	Flat wool textile with subtle striped texture. Large scale of colour blends.
Composition	90% wool, 10% polyamide
Martindale	100.000
Environment	EU Ecolabel
Flame resistance	AS/NZS 1530.3, BS 5852 part 1, EN 1021-1/2, IMO FTP Code 2010 Part 8, NF D 60 013, NFPA 260, SN 198 898 5.3 with treatment, UNI 9175 1IM, US Cal. Bull. 117-2013, ÖNORM B1/ Q1, BS 5852 ignition source 3, BS 5852 Crib 5
Pilling	4
Lightfastness	6
More info	kvadrat.dk
Total no of colours	46



CAPTURE

Fabric Group 1

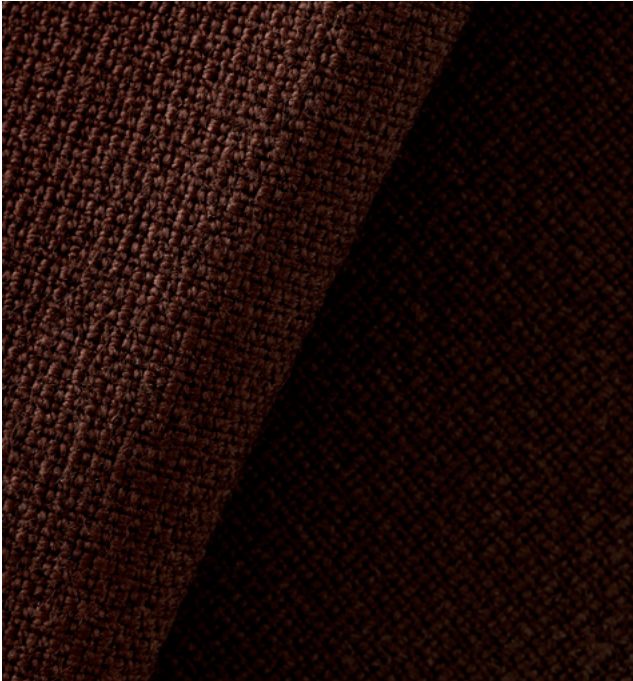


About	Capture is a lightly felted and multi-coloured wool fabric in a casual yet sophisticated tweed look..
Composition	85% New Zealand wool, 15% polyamide
Martindale	100.000
Environment	STANDARD 100 by OEKO-TEX®, EU Ecolabel
Flame resistance	BS EN 1021 1&2 Cigarette and Match, BS 5852 Part 1 0,1 Cigarette & match, Class Uno UNI 9175 Class 1 I EMME CA TB 117-2013
Pilling	4-5
Lightfastness	5-7
More info	gabriel.dk
Total no of colours	25



FAME

Fabric Group 1



About	Classic flat woven wool fabric in monochrome colours Suitable for flat upholstery.
Composition	95% wool, 5% polyamide
Martindale	100.000
Environment	EU Ecolabel
Flame resistance	BS EN 1021-1 Cigarette, BS EN 1021-2 Match, BS 5852 Crib 5, CA TB 117-2013, Class Uno UNI 9175 Class 1 EMME, AM 18 - NF D 60-013, BS 5852 Part 1 0,1 Cigarette & match, ÖNORM B 3825-B1-3800-Q1 UK, IMO MSC 307(88) Annex 1 part 8, MED Certificate IMO, BS 476 Part 7, class 1
Pilling	4
Lightfastness	5-7
More info	gabriel.dk
Total no of colours	60



FIORD

Fabric Group 2



About	A soft, nubby surface and subtle colour blends wool fabric. Suitable for all upholstery.
Composition	92% wool, 8% polyamide
Martindale	60.000
Environment	EU Ecolabel
Flame resistance	BS 5852 Crib 5 with treatment, BS 5852 part 1, DIN 4102 B2, EN 1021-1/2, IMO FTP Code 2010 Part 8, NF D 60 013 UNI 9175 11M, US Cal. Bull. 117-2013, AS/NZS 3837, class 2 SN 198 898 5.3 with treatment
Pilling	4-5
Lightfastness	6
More info	kvadrat.dk
Total no of colours	27



REMIX

Fabric Group 1

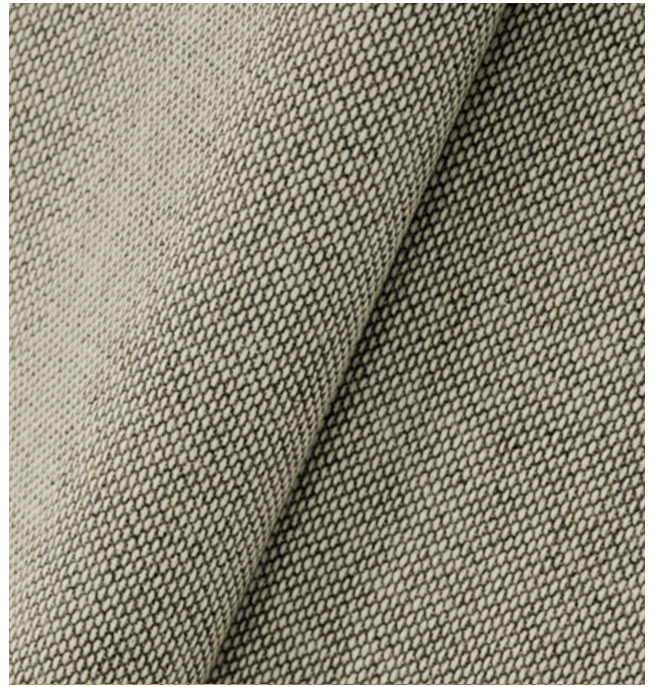


About	Flat wool textile with a large scale of colour blends.
Composition	90% wool, 10% polyamide
Martindale	100.000
Environment	EU Ecolabel
Flame resistance	AS/NZS 1530.3, AS/NZS 3837, class 2, BS 5852 part 1, EN 1021-1/2, IMO FTP Code 2010 Part 8, NF D 60 013, NFPA 260, UNI 9175 1IM, US Cal. Bull. 117-2013, ÖNORM B1/ Q1, BS 5852 Crib 5
Pilling	5
Lightfastness	5
More info	kvadrat.dk
Total no of colours	49



RE-WOOL

Fabric Group 2



About	Upholstery textile with a subtle yet visible woven structure and soft colourways enriched by sparks. Produced using 45% recycled wool from Kvadrat's English mills.
Composition	45% wool, 45% recycled wool, 10% polyamide
Martindale	50.000
Environment	EU Ecolabel
Flame resistance	AS/NZS 1530.3, BS 5852 Crib 5 with treatment, BS 5852 ignition source 3, BS 5852 part 1, EN 1021-1/2, IMO FTP Code 2010 Part 8, NF D 60 013, UNI 9175 1IM, US Cal. Bull. 117-2013, ÖNORM B1/ Q1
Pilling	4
Lightfastness	7
More info	kvadrat.dk
Total no of colours	21





Pato Office Chair by Welling/Ludvik.
Fabric: Rime 471 .

Full-bodied Wool Fabrics

You'll find that full-bodied wool fabrics are suitable for almost every upholstery purpose due to their mass and character. The natural properties of wool intrinsic to this group have a range of impressive features. Naturally flame retardant and soil resistant. It is very comfortable because it absorbs humidity without causing it to feel moist. It also tempers the body. When you combine the numerous natural properties of wool with the soft touch and delicate shine of vegetal-derived fibres, full-bodied wool fabrics are as practical to use as they are sophisticated.

DIVINA MELANGE, FUSE, HALLINGDAL, MOOD,
NOISE, STEELCUT TRIO, TONUS, VIDAR

Ditzel Lounge Chair by Nanna Ditzel.
Fabric: Hallingdal 103. Wood: Smoked Oak

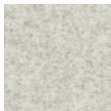


DIVINA MELANGE 3

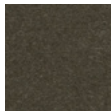
Fabric Group 3



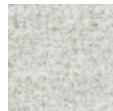
About	Classic wool felt used for furniture as well as clothing. Divina Melange 2 (melange yarns) are suitable for all upholstery. Domestic to moderate public use.
Composition	100% wool
Martindale	45.000
Environment	EU Ecolabel
Flame resistance	AS/NZS 1530.3, BS 5852 Crib 5, BS 5852 part 1, BS 5867 part 2 type B, EN 1021-1/2, EN 13501, C-s1, d0, glued, IMO FTP Code 2010 Part 8, NF D 60 013, NFPA 260, SN 198 898 5.3 with treatment, UNI 9175 1IM, US Cal. Bull. 117-2013, ÖNORM B1/ Q1, BS 5852 ignition source 3
Pilling	3
Lightfastness	6-7
More info	kvadrat.dk
Total no of colours	24



220
Light sand



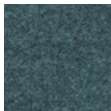
280
Dark brown



120
Cold grey



180
Charcoal



771
Dusty blue

FUSE

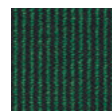
Fabric Group 5



About	Densely woven wool and cotton blend with a close pattern of ribbed stripes in which the weave creates rows of stitch-like patterning.
Composition	65% wool, 23% wool, 8% viscose, 4% polyamide
Martindale	100.000
Environment	Sustainable resource
Flame resistance	BS 5852 Crib 5, BS 5852 part 1, DIN 4102 B2, EN 1021-1/2, IMO FTP Code 2010 Part 8, NF D 60 013, UNI 9175 1IM, US Cal. Bull. 117-2013, ÖNORM B1/ Q1
Pilling	3-4
Lightfastness	7
More info	kvadrat.sims.com
Total no of colours	10



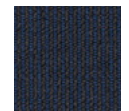
351
Clay



981
Ancient green



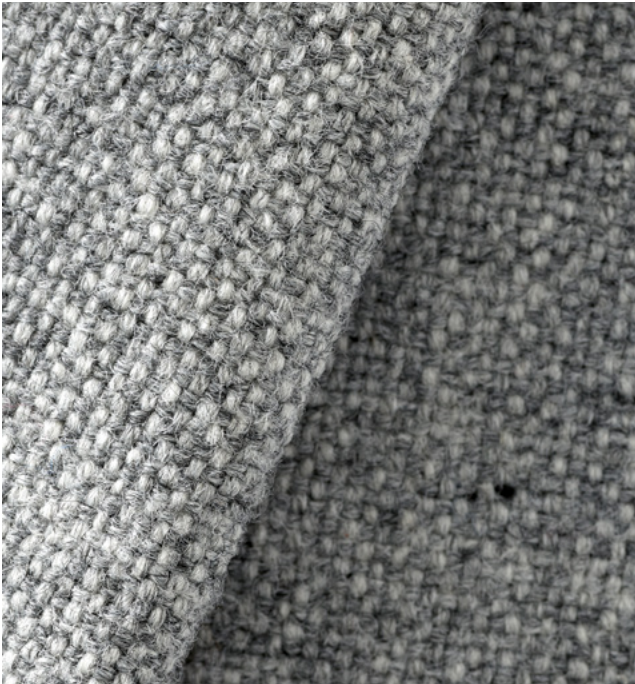
131
Cold grey



191
Navy blue

HALLINGDAL 65

Fabric Group 2



About	Classic wool-viscose blend with voluminous grip and a large scale of colour blends. Suitable for all upholstery. Designed by Nanna Ditzel in 1965.
Composition	70% wool, 30% viscose
Martindale	100.000
Environment	EU Ecolabel
Flame resistance	AS/NZS 1530.3, AS/NZS 3837, BS 5852 Crib 5, BS 5852 part 1, EN 1021-1/2, IMO FTP Code 2010 Part 8, NF D 60 013, NFPA 260, SN 198 898 5.3 with treatment, UNI 9175 1IM, US Cal. Bull. 117-2013, ÖNORM B1/ Q1, BS 5852 ignition source 3
Pilling	3
Lightfastness	7
More info	kvadrat.dk
Total no of colours	56



MOOD

Fabric Group 1

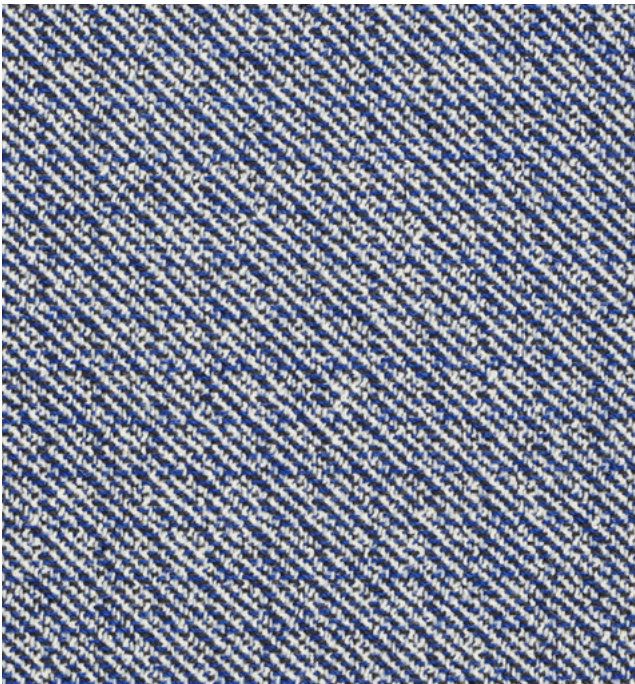


About	Wool fabric with a fluted surface structure. Natural and burnt colour shades.
Composition	92% wool, 8% polyamide
Martindale	90.000
Environment	EU Ecolabel
Flame resistance	BS EN 1021-2 Match, BS EN 1021-1 Cigarette, BS 5852 Part 1 0,1 Cigarette & match, BS 476 Part 7, class 1, Class Uno UNI 9175 Class 1 EMME, CA TB 117-2013
Pilling	4
Lightfastness	5-7
More info	gabriel.dk
Total no of colours	31

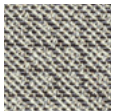


NOISE

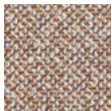
Fabric Group 5



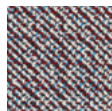
About	Wool blend in which strong diagonal stripes are broken up by flecks of sharp or neutral colours.
Composition	96% wool, 4% polyamide
Martindale	30.000
Environment	EU Ecolabel
Flame resistance	BS 5852 part 1, DIN 4102 B2, EN 1021-1/2, IMO FTP Code, 2010 Part 8, NF D 60 013, UNI 9175 1IM, US Cal. Bull. 117-2013, BS 5852 Crib 5 with treatment
Pilling	4
Lightfastness	6-7
More info	kvadratraftsimons.com
Total no of colours	10



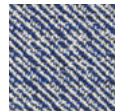
132
Clay



222
Camel



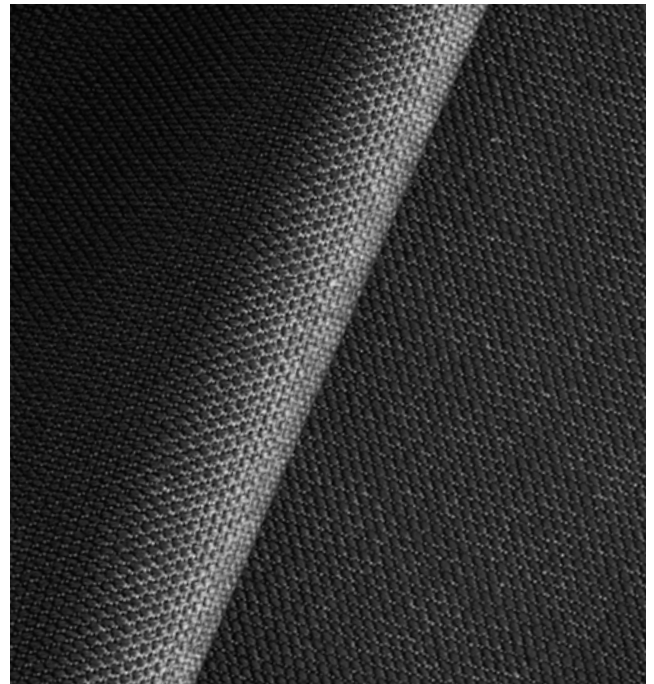
852
Deep red



742
Navy blue

STEELCUT TRIO 3

Fabric Group 2



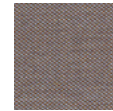
About	Tightly woven wool textile in three-colour mix.
Composition	90% wool, 10% polyamide
Martindale	100.000
Environment	EU Ecolabel
Flame resistance	AS/NZS 3837, class 2, BS 5852 part 1, EN 1021-1/2, IMO FTP Code 2010 Part 8, NF D 60 013, NFPA 260, SN 198 898 5.3 with treatment, UNI 9175 1IM, US Cal. Bull. 117-2013 ÖNORM B1/ Q1, BS 5852 Crib 5 with treatment, AS/NZS 1530.3, BS 5852 ignition source 3
Pilling	4
Lightfastness	5
More info	kvadrat.dk
Total no of colours	54



213
Light sand



235
Camel



376
Clay



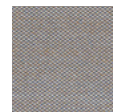
383
Dark brown



113
Cold grey



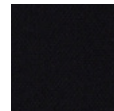
466
Cognac



266
Clay



756
Dusty blue



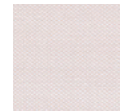
195
Navy blue



996
Ancient green



916
Ancient green



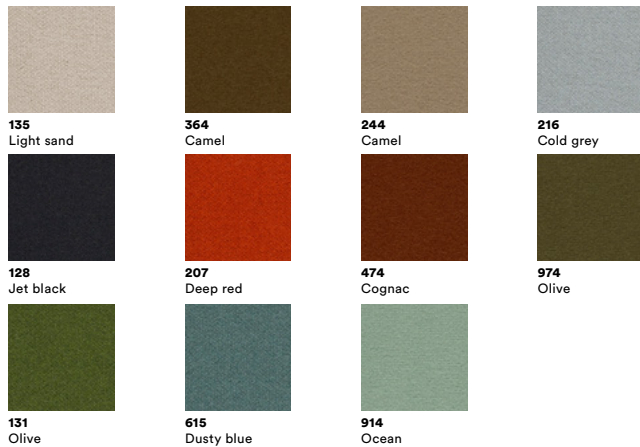
226
Powder nude

TONUS 4

Fabric Group 2

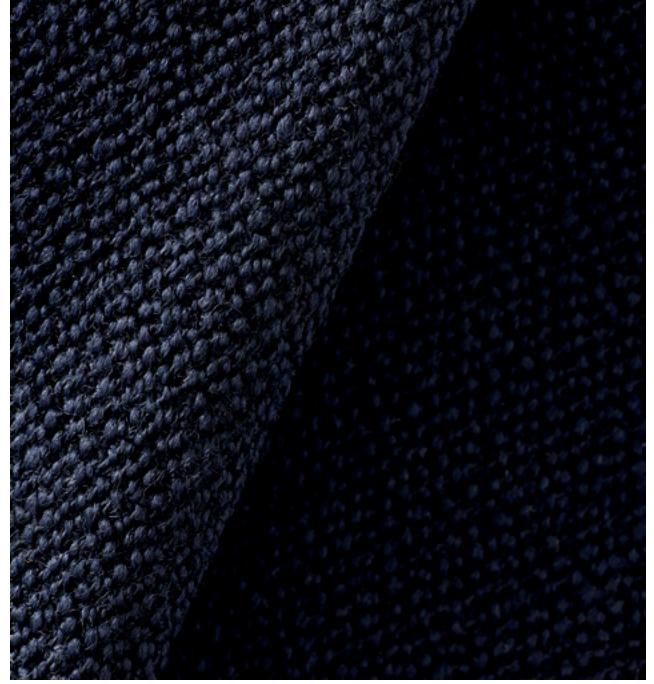


About	Classic plain-weave wool fabric with a comfortable soft touch and luxurious density.
Composition	90% wool, 10% helanca
Martindale	100.000
Environment	EU Ecolabel
Flame resistance	AS/NZS 1530.3, BS 5852 part 1, EN 1021-1/2, IMO FTP Code 2010 Part 8, NF D 60 013, NFPA 260, SN 198 898 5.3 with treatment, UNI 9175 1IM, US Cal. Bull. 117-2013, ÖNORM B1/ Q1, BS 5852 Crib
Pilling	3
Lightfastness	6-7
More info	kvadrat.dk
Total no of colours	47

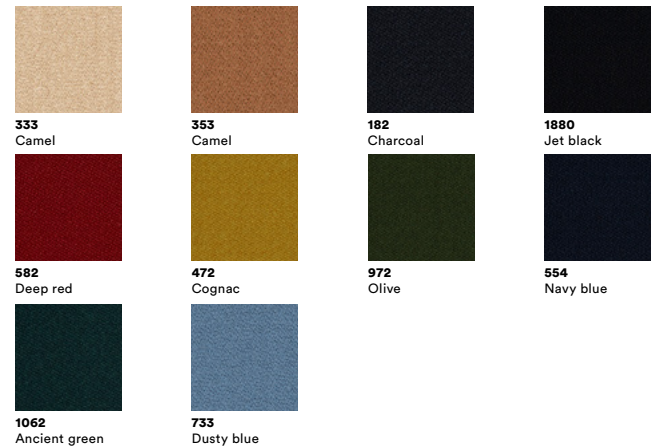


VIDAR 3

Fabric Group 3



About	Elegant tightly woven wool textile with a matt, harmonious surface and a beautiful crepe texture.
Composition	94% wool, 6% polyamide
Martindale	100.000
Environment	EU Ecolabel
Flame resistance	DIN 4102 B2, EN 1021-1/2, IMO FTP Code 2010 Part 8, NF D 60 013, UNI 9175 1IM, US Cal. Bull. 117-2013, BS 5852 part 1, NFPA 260, BS 5852 Crib 5
Pilling	4
Lightfastness	5-6
More info	kvadrat.dk
Total no of colours	31



Linen and Soft Unions

Cotton and linen fibres make exceptionally soft and skin-friendly fabrics. Whilst some of the fabrics in this group are combined with a percentage of wool, the result is a more durable fabric that's easier to maintain. As opposed to most soft union fabrics that must be kept well in order to keep their appearance. The vegetal fibres are especially suitable for damp climates, since they tend to have a cooling effect due to their breathability and ability to absorb humidity.

AGUILIA, CLAY, LINARA, RUSKIN,
SUNNIVA, SINEQUANON

Calmo Sofa by Hugo Passo.

Fabric: Ruskin 10.



AGUILA

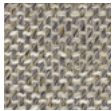
Fabric Group 2



About	Viscose- and cotton union with an outspoken woven structure that creates an Italian flair. Made in Italy and supplied directly to Fredericia.
Composition	60% viskose, 20% bomuld, 17% polyester, 3% linen
Martindale	90.000
Environment	Oeko-Tex
Flame resistance	BS 5852 : 2006 - Source 0, BS 5852 : 2006 - Source 1
Pilling	4
Lightfastness	5
More info	fredericia.com
Total no of colours	2



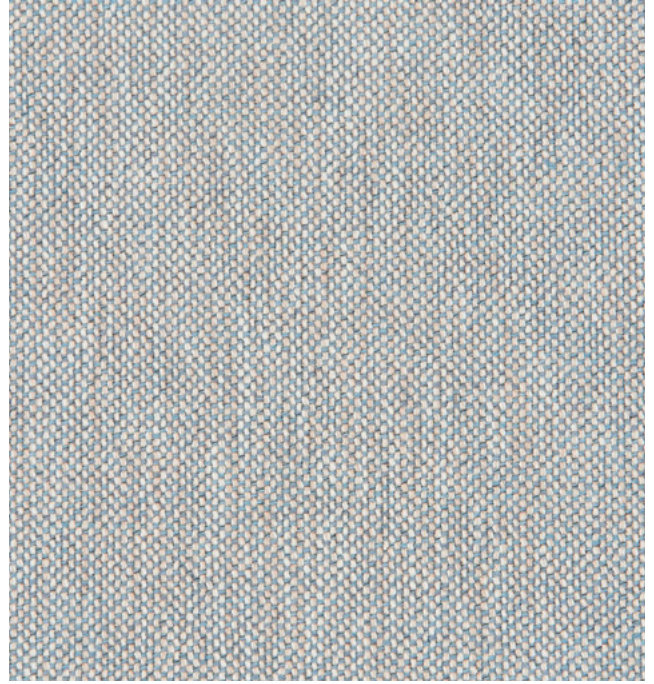
201
Light sand



210
Light sand

CLAY

Fabric Group 1



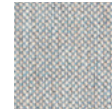
About	An elegant yet casual linen / cotton fabric with a structured two-toned surface. With a back cloth that gives extra stability, Clay is perfect for upholstering sofas.
Composition	76% Linen, 21% Cotton, 3% Polyester
Martindale	45.000
Environment	Complies with REACH regulation
Flame resistance	BS 5852 source 0/1 EN 1021-1/2
Pilling	4
Lightfastness	5
More info	sahco.com
Total no of colours	17



0011
Light sand



0009
Clay



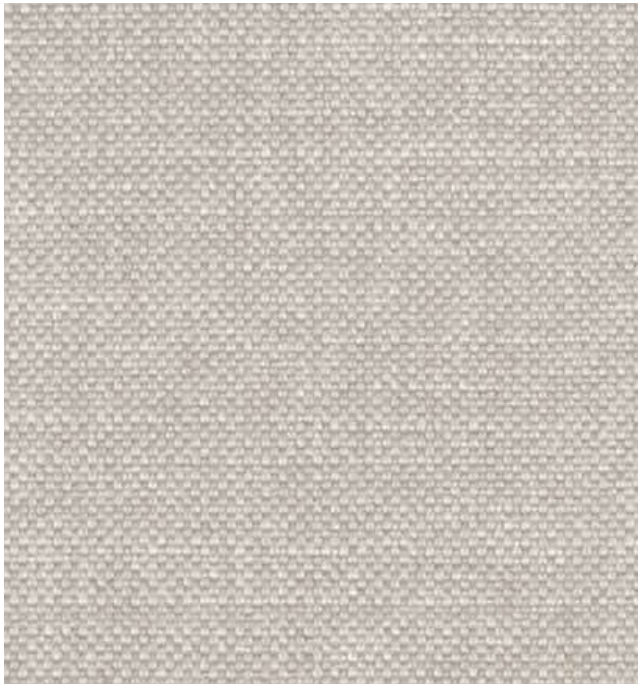
0003
Cold grey



0017
Olive

LINARA

Fabric Group 1



About	Cotton-linen blend with a brushed finish and a soft, peach-skin feel. Very versatile plain for soft upholstery.
Composition	63% Cotton, 37% Linen
Martindale	36,000
Flame resistance	BS 5852 PART 1 IGN 0 CIGARETTE, BS 5852 Part 1 Exempt (With IGN 5 Interliner), EN1021 Part 1 Upholstery, NFPA260, CAL117
Lightfastness	5
More info	romo.com
Total no of colours	40



RUSKIN

Fabric Group 1



About	Soft and elegant textile combining viscose and linen creating motion and depth in the colourways. Discrete yet visible surface structure.
Composition	70% viscose, 15% linen, 10% wool, 5% polyamide
Martindale	60.000
Environment	EU Ecolabel
Flame resistance	Bs 5852 Part 1 Ign 0, Bs 5852 Part 1 Ign 1 With Treatment, Bs 5852 Part 1 Exempt, Bs 5852 Part 2 Ign 5 Crib Contract Upholstery With Treatment
Lightfastness	5
More info	romo.com
Total no of colours	40

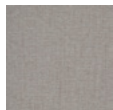


SUNNIVA 2

Fabric Group 2



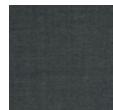
About	Wool/viscose/linen mix with a classic look and natural shine. Natural and subtle colourways.
Composition	58% wool, 25% viscose, 8% linen, 5% polyamide, 4% polyester
Martindale	50.000
Environment	Greenguard
Flame resistance	BS 5852 part 1, ig. s. 0, EN 1021-1/2, US Cal. Bull. 117-2013 NFPA 260, IMO FTP Code 2010 Part 8, AS/NZS 3837, class 2, BS 5852 Crib 5 with treatment
Pilling	3
Lightfastness	5-6
More info	kvadrat.dk
Total no of colours	24



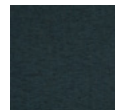
717
Light sand



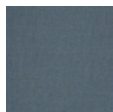
242
Cold grey



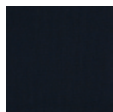
1079
Charcoal



172
Dusty blue



752
Dusty blue



192
Navy blue



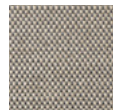
132
Ocean

SINEQUANON

Fabric Group 3



About	Linen-viskose union with yarns in two-tone, creating a sophisticated colour range with a subtle shine. Comes with waterrepellent treatment which offers specific protection from liquids and oils. Not suitable for hard public use.
Application	A B C D E
Composition	60% viscose, 16% linen, 13% cotton, 6% polyacrylic, 5% polyester
Martindale	35.000
Flame resistance	BS 5852 PART 1 IGN 0 CIGARETTE, BS 5852 PART 1 IGN 1 MATCH
More info	dedar.com
Total no of colours	36



01
Light sand



37
Camel



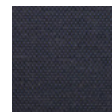
25
Clay



02
Black brown



24
Olive



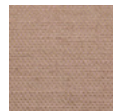
13
Navy blue



23
Ancient green



21
Ocean



16
Powder nude

Calmo Sofa by Hugo Passo.
Fabric: Ruskin 10.



Bouclé

Given the three-dimensional surface texture, bouclé adds depth and a lush sense of luxury to any furniture or design. Primarily composed of wool, the fabrics in this group are naturally flame retardant and soil resistant. The bouclés vary from heavy and plush to more slender bouclé, where the binding adds vibrancy to tight upholsteries.

CARLOTTO, PILOT

Swoon Chair by Space Copenhagen
Fabric: Carlotto 200.



CARLOTTO

Fabric Group 2



About	Voluminous wool bouclé with a very soft surface and structure. High wear resistance and suitable for both private and public use. Made in Italy and supplied directly to Fredericia.
Composition	38% wool, 37% polyacrylic, 18% polyester, 7% cotton
Martindale	100.000
Environment	Oeko-Tex
Flame resistance	BS 5852 : 2006 - Source 0, BS 5852 : 2006 - Source 1
Pilling	4
Lightfastness	4-5
More info	fredericia.com
Total no of colours	6



200
Light sand



400
Dark brown



110
Jet black



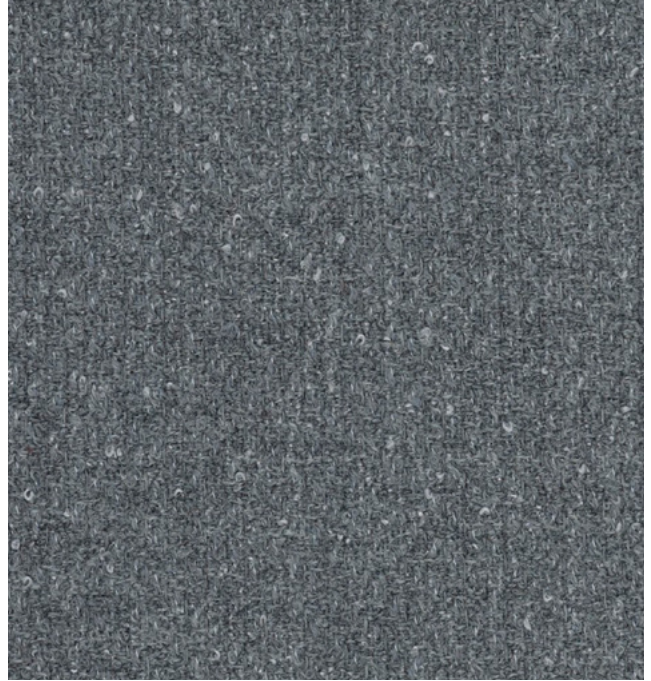
900
Olive



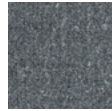
800
Navy blue

PILOT

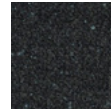
Fabric Group 5



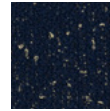
About	This bouclé fabric marries the softness and intense colour of merino wool to the lustre of contrasting yarns. Suitable for all upholstery.
Composition	82% wool, 10% polyester, 8% polyamide
Martindale	70.000
Environment	Greenguard
Flame resistance	BS 5852 part 1, DIN 4102 B2, EN 1021-1/2, IMO FTP Code 2010 Part 8, UNI 9175 1IM, US Cal. Bull. 117-2013, ÖNORM B1/ Q1, AS/NZS 3837, class 2, BS 5852 Crib 5
Pilling	4
Lightfastness	7
More info	kvadrat.dk
Total no of colours	10



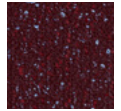
132
Cold grey



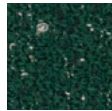
162
Charcoal



792
Navy blue



582
Dark red



972
Ancient green



Swoon Lounge Chair by Space Copenhagen.
Fabric: Carlotto 900

Velvets

Whether made of cotton or mohair wool, what all our velvets share is a soft touch and sense of sophistication. Not to mention their ability to exude depth and character in terms of colours.

The open pile characteristic of velvet makes it sensitive to dirt and vulnerable to showing indentations from transportation or usage. All velvets must be vacuumed and occasionally brushed or steamed to maintain their appearance over time.

BYRAM, GENTLE, GRAND MOHAIR, HARALD, SAVOY

Swoon Lounge Chair by Space Copenhagen.
Fabric: Harald, 242. Wood: Black lacquered



BYRAM

Fabric Group 5

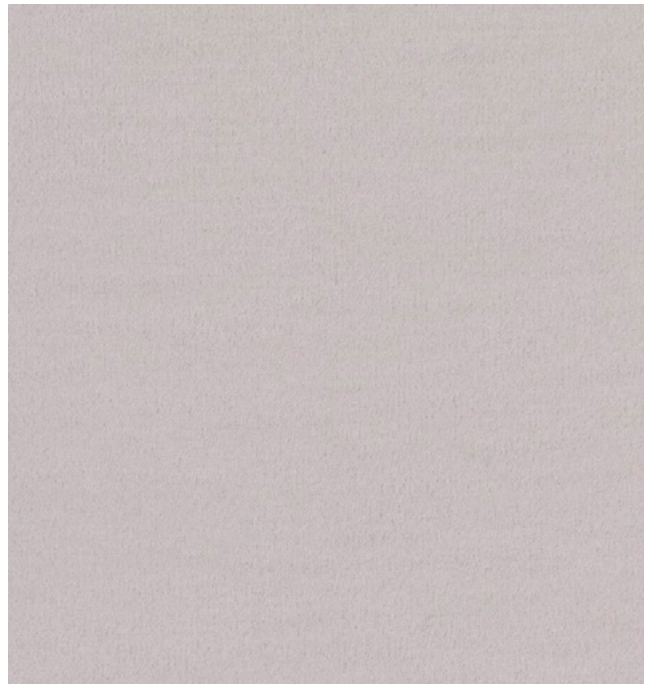


About	Mohair velor with a very close pile that gives a great color depth. Suitable for all upholstery, but not on prominent pipings.
Composition	65% wool, 23% cotton, 8% viscose, 4% polyamide
Martindale	70.000
Environment	Greenguard
Flame resistance	AS/NZS 1530.3, BS 5852 Crib 5, BS 5852 part 1, BS 5867 part 2 type B, EN 1021-1/2, IMO FTP Code 2010 Part 8, NF D 60 013, UNI 9175 1IM, US Cal. Bull. 117-2013, SN 198 898 5.3 with treatment
Pilling	4-5
Lightfastness	4
More info	kvadrat.dk
Total no of colours	19



GENTLE 2

Fabric Group 4



About	Innovative velvet on a knitted base, which makes it exceptionally suitable for certain curved upholstery. The surface and colour scale of this wool and polyamide union has a dry look, while keeping the vibrant colour options known from traditional velvets.
Composition	60% New wool, 20% Polyester, 20% Nylon
Martindale	90.000
Flame resistance	BS 5852 Part 1, DIN 4102 B2, EN 1021-1/2 IMO FTP Code 2010:Part 8 US Cal. Bull. 117-2013
Pilling	4-5
Lightfastness	6-7 (ISO 1-8)
More info	kvadrat.dk
Total no of colours	21

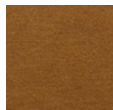
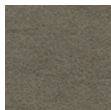
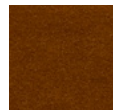
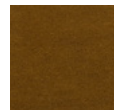


GRAND MOHAIR

Fabric Group 4



About	Mohair velvet with a tight and elegant pile. Suitable for all upholstery except for dominant pipings.
Composition	100% mohair (pile), 100% cotton (base)
Martindale	+100.000 (Wyzenbeek)
Environment	Oeko-tex
Flame resistance	Cal 117-2013, NFPA 260, Class 1, BS 5852: 2006, clause 11, Crib 5, EN 1021, 1 & 2, IMO A. 652
Lightfastness	4-5
More info	daw.dk
Total no of colours	36

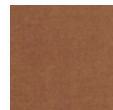
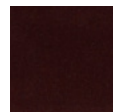
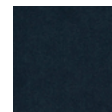
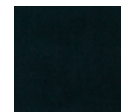
2001
Camel9103
Olive2103
Cognac2600
Cognac

HARALD

Fabric Group 2



About	Cotton velour with a tight pile. Velour can acquire press marks either from transport or in use. Suitable for domestic to moderate public use.
Composition	100% Cotton
Martindale	100.000
Environment	Greenguard
Flame resistance	EN 1021-1, AS/NZS 1530.3, AS/NZS 3837, class 1
Pilling	4-5
Lightfastness	5
More info	kvadrat.dk
Total no of colours	30

343
Camel242
Clay283
Dark brown192
Jet black382
Deep red182
Dusty blue792
Royal blue982
Ancient green823
Ocean

SAVOY

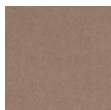
Fabric Group 2



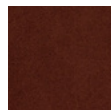
About	Savoy is a short pile velvet upholstery fabric made from high-performing, wear-resistant and flame-retardant Trevira CS polyester. It is suitable for residential as well as commercial interiors alike.
Composition	100% Trevira CS
Martindale	100.000
Environment	OEKO-TEX®
Flame resistance	BS EN 1021-1 Cigarette, BS EN 1021-2 Match, BS 5852 Part 1 0,1 Cigarette & match, BS 5852 Crib 5, DIN 4102 - B1, NFP 92-503/504/505 M1, AM 18 - NF D 60-013-(only for fabric), Class Uno UNI 9175 Class 1 I EMME, CA TB 117-2013
Pilling	5
Lightfastness	5-8
More info	gabriel.dk
Total no of colours	35



61222
Cognac



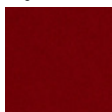
61217
Clay



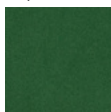
61223
Dark brown



60200
Jet black



64143
Deep red



68151
Ancient green

Swoon Lounge by Space Copenhagen.
Fabric: Grand Mohair 2001



Technical Fabrics

Light and versatile fabrics based on synthetic fibres, such as polyester, make these fabrics very durable. Easy to clean, a clever engineering of the different structures makes them both breathable and comfortable when used in furniture.

COMFORT, MERIT

COMFORT +

Fabric Group 3



About	Microfibre textile with a gentle surface and large colour scale. Anti-static and flame retardant backing.
Composition	88% polyester, 12% polyethane
Martindale	100.000
Environment	Oeko-Tex
Flame resistance	BS 5852 Part 1 0,1 Cigarette & match, BS EN 1021 1&2 Cigarette and Match, BS EN 1021-1 Cigarette, ÖNORM B 3825-B2-3800-Q1 UK, NF P 92-503 M3, CA TB 117-2013
Pilling	5
Lightfastness	5-7
More info	gabriel.dk
Total no of colours	77



MERIT

Fabric Group 2



About	Innovative textile made of 76% recycled polyester. Out-spoken yet harmonious surface structure in dual colours.
Composition	76% recycled polyester, 24% new polyester
Martindale	100.000
Environment	Greenguard Certification
Flame resistance	BS 476 part 7 + 6 with treatm, BS 5852 Crib 5 with treatment, BS 5852 part 1 with treatment, EN 1021-1/2, US Cal. Bull. 117-2013
Pilling	4
Lightfastness	7
More info	kvadrat.dk / maharam.com
Total no of colours	43





Calmo Sofa by Hugo Passos. Fabric: Ruskin 10.
Tableau Coffee Table by Space Copenhagen
Magazine Table by Jens Risom
The Spanish Chair by Børge Mogensen



Wood



OAK SOAP



About Soap treatment is a finish that leaves the surface as raw and natural as possible. The natural oils of the soap gently seal the wood and gives it some stain resistance, however a new soap treatment must be applied from time to time to maintain the appearance. Soaped oak is light when new and darkens over time. Oak has a relatively open surface with a visible grain structure, where beautiful flecking is an effect that can naturally occur in solid oak.

OAK OILED



About Oil treatment enhances the warm tones of oak. The oil used is a clear, natural wax-oil. This seals the surface to make it water and stain resistant, thus minimising any visible marks. The oil is absorbed into the wood and creates a smooth surface with a silky touch. Over time, the oil will dry out and new oil must be applied to avoid a dull surface. Oak has a relatively open surface with a visible grain structure. Beautiful flecking is an effect that can naturally occur in solid oak.

OAK LACQUERED



About European oak. A light lacquer treatment partially fills the grain, so the wood structure can be seen on the surface. Oak has a relatively open surface with a visible grain structure. This light lacquer treatment is gentler than a dense lacquer, consequently scratches will not be easily exposed. The wood itself has a nice tactile feel and the natural ageing over time will be more beautiful. A delicate white pigment is added to the lacquer to maintain the light appearance of the oak. Flecking is a lovely effect that can naturally occur in solid oak.

SMOKED OAK, OILED



About European oak. Smoked oak with oil treatment is only used for solid wood. The oak is fumed in special steam that darkens the surface and makes the colour browner. Different parts of the solid oak absorb the fume to different degrees and colour differences will naturally occur. After fuming, the oil treatment further enhances the warm tones of the oak. The oil used is a clear, natural oil with beeswax. This seals the surface to make it water and stain resistant, thus minimising any visible marks. Over time, the oil will dry out and new oil must be applied to avoid a dull surface. Beautiful flecking is an effect that can naturally occur in solid oak.

SMOKED OAK STAINED, LACQUERED



About European oak. Smoked oak stained is a stain treatment that resembles the colour of smoked oak. It is used in furniture where the natural variation in wood requires a more harmonious result than what fumed smoked oak can offer. Frederica uses a stain solution that enhances the warm tones of the oak and reveals the natural wood structure. After staining, the wood is covered with a delicate layer of lacquer. As a result, smoked oak stained is easy to maintain and able to resist stains and water quite well.

GREY OAK STAINED, LACQUERED



About European oak. A stain treatment that reveals the wood structure whilst adding grey tones to the surface. After staining, the wood is covered with a delicate layer of lacquer. As a result, grey oak stained is easy to maintain and able to resist stains and water quite well.

LIGHT GREY OAK STAINED, LACQUERED



About European oak. A stain treatment that reveals the wood structure whilst adding light grey tones to the surface. After staining, the wood is covered with a delicate layer of lacquer. As a result, light grey oak stained is easy to maintain and able to resist stains and water quite well.

BLACK LACQUERED



About Black lacquer in RAL 9005 colour. After the black lacquer is applied to oak or ash, the grain structure of both will be visible. Applied to beech, the surface structure becomes more harmonious, where the visible grain structure is limited.

WHITE ASH



About Painted white ash RAL 9016. Ash is chosen for its surface structure, which is visible after applying the paint. Applied to beech, the surface structure becomes more harmonious, where the visible grain structure is limited.

ASH LACQUERED



About European ash. Protected against dirt with an ultra matt lacquer that also features UV protection against yellowing. The lacquer has white pigment for a light, harmonious and crisp wood color. The wood grain retains its natural and tactile feel and the aging over time will be beautiful.

WALNUT LACQUERED



About American walnut with a tight, "closed" surface structure. A light lacquer treatment that partially fills the grain is applied to seal the surface and make it stain and water resistant. This light lacquer treatment is gentler than a dense lacquer, consequently scratches will not be easily exposed. The wood itself has a nice tactile feel and the natural ageing over time will be more beautiful. The lacquer applied to walnut is clear without any colour pigment.

WALNUT OILED



About American walnut with a tight, "closed" surface structure. The oil used is a clear, natural wax-oil. This seals the surface to make it water and stain resistant, thus minimising any visible marks. The oil is absorbed into the wood and creates a smooth surface with a silky touch. Over time, the oil will dry out and new oil must be applied to avoid a dull surface.

BEECH SOAP



About European beech. Soap treatment is a finish that leaves the surface as raw and natural as possible. The natural oils of the soap gently seal the wood and gives it some stain resistance, however new soap must be applied from time to time to maintain the appearance. Soaped beech is light when new and darkens over time. Beech has a tight and harmonious surface structure with a smooth tactile feel.

BEECH LACQUERED



About European beech has a tight and harmonious surface structure. A light lacquer treatment partially fills the grain so the wood structure can be seen on the surface. Oak has a relatively open surface with a visible grain structure. This light lacquer treatment is gentler than a dense lacquer, consequently scratches will not be easily exposed. The wood itself has a nice tactile feel and the natural ageing over time will be more beautiful. A delicate white pigment is added to the lacquer to maintain the light appearance of the beech.

Pon Table by Jasper Morrison
Wood: Soaped oak, Black lacquered



Stone



DARK ATLANTICO LIMESTONE



About Dark Atlantico is a limestone with a beautiful natural surface and warm colour tones in umbra grey shades. It should be treated as marble, which is actually crystallised limestone. Part of the intriguing nature of limestone is the subtle, possible aspect of fossils. Whilst limestone is native to the Nordic countries, Fredericia's Dark Atlantico Limestone is sourced from Portugal.

GREY KENDZO MARBLE



About Grey Kendzo is a marble with a matt, grey surface and natural, irregular flecks of white, which vary considerably from batch to batch. Grey Kendzo is sourced from Portugal.

Metal

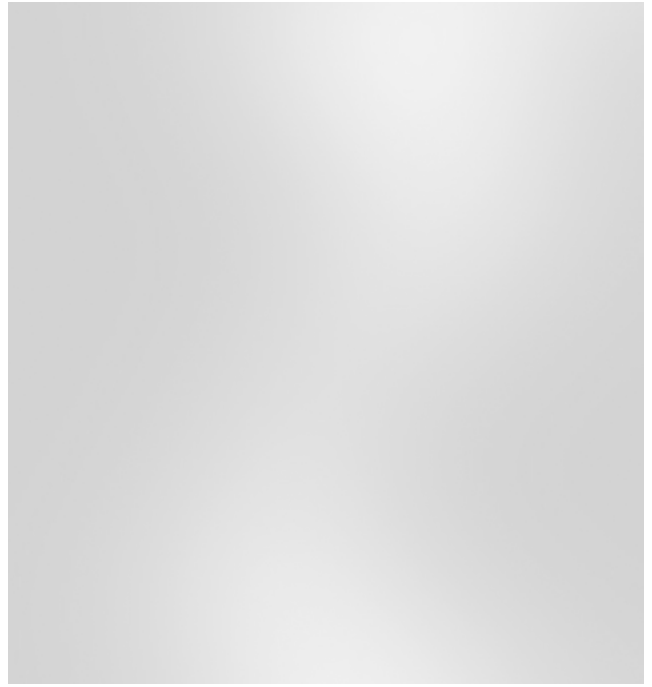


CHROME



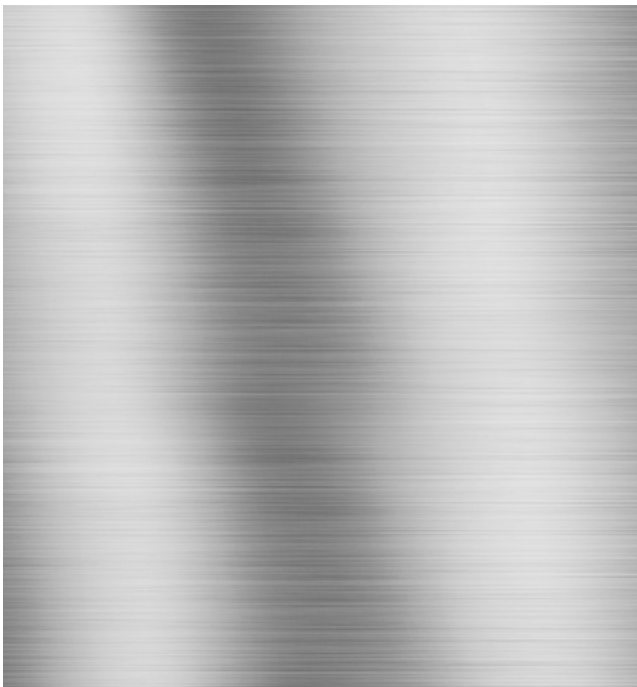
About Chrome-plated steel in glossy finish. Fredericia only uses Chrome III, which is the most environmentally-friendly chroming process available. It is also the most durable plating available for steel and therefore the preferred choice for stacking chairs in high-traffic environments, where frames are exposed to friction. The finished plating is free from any risk of allergies.

MATT CHROME



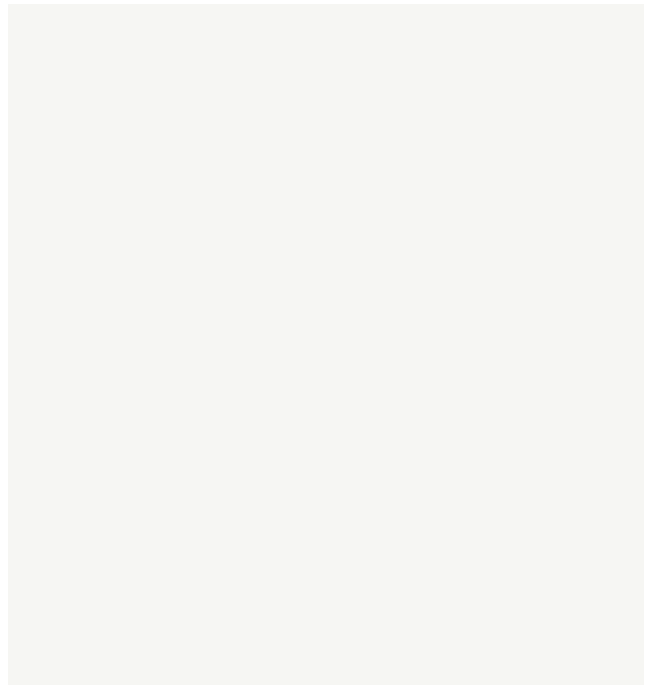
About Chrome-plated steel in satin finish. Fredericia only uses Chrome III, which is the most environmentally-friendly chroming process available. It is also the most durable plating available for steel and therefore the preferred choice for stacking chairs in high-traffic environments, where frames are exposed to friction. The finished plating is free from any risk of allergies.

STAINLESS STEEL



About Stainless steel in brushed finish.

WHITE



About Powder-coated RAL 9016 with a smooth surface. Powder coating is the most environmentally-friendly surface finish available and can be used on both steel and aluminium parts.

BLACK



About Powder-coated RAL 9005 with a smooth surface. Powder coating is the most environmentally-friendly surface finish available and can be used on both steel and aluminium parts.

SATIN BRASS



About Our Fredericia Satin brass surface finish is a special powder coat with a smooth surface. Satin brass can be compared with satin-chromed brass, however Satin brass has the environmentally-friendly features of powder coats which makes the application universal. Satin brass can be used on both steel and aluminium parts.

FLINT



About Our Fredericia Flint surface finish is a special powder coat with a smooth surface. Flint can be compared with so-called "gunmetal", however Flint has the environmentally-friendly features of powder coats, which makes the application universal. Flint can be used on both steel and aluminium parts.

DARK BRONZE



About Our Fredericia Dark bronze surface finish is a special powder coat with a smooth surface. Dark bronze can be compared with the dark yet warm look of completely oxidised bronze, however Dark bronze has the environmentally-friendly features of powder coats, which makes the application universal. Dark bronze can be used on both steel and aluminium parts.

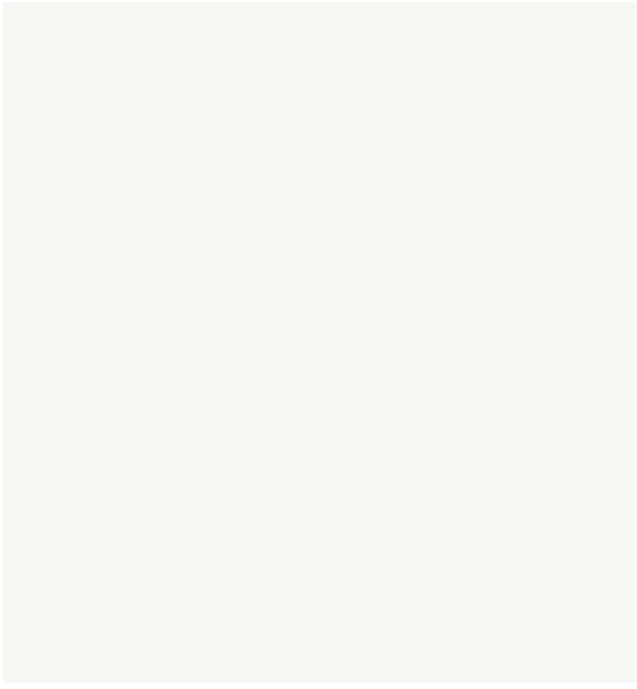
Trinidad Chair by Nanna Ditzel
Wood: Smoked Oak. Metal: Flint



Laminate

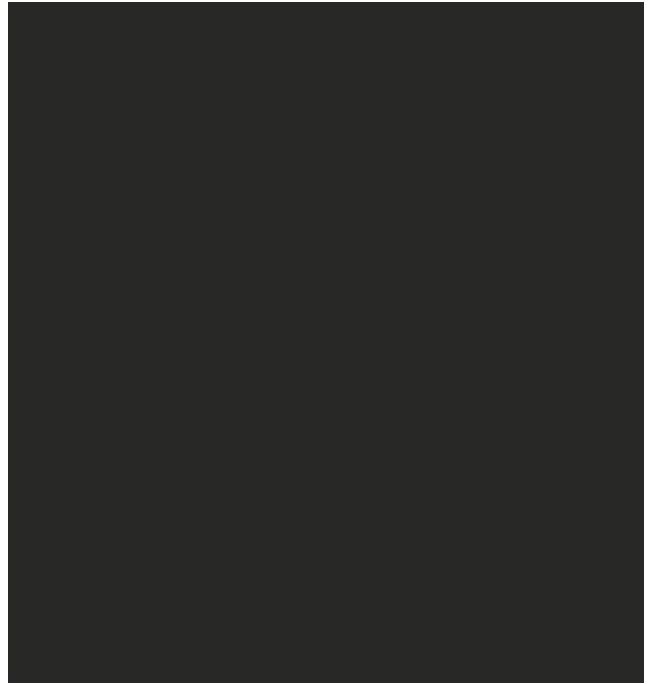


NANO LAMINATE WHITE



About Nano Laminate (Fenix 0032), sourced from the Italian company Fenix. A material known for its delicately matt, ultra-smooth surface. Nano Laminate has a self-repairing surface that "heals" minor scratches.

NANO LAMINATE BLACK



About Nano Laminate (Fenix 0720), sourced from the Italian company Fenix. A material known for its delicately matt, ultra-smooth surface. Nano Laminate has a self-repairing surface that "heals" minor scratches.

NANO LAMINATE ALMOND

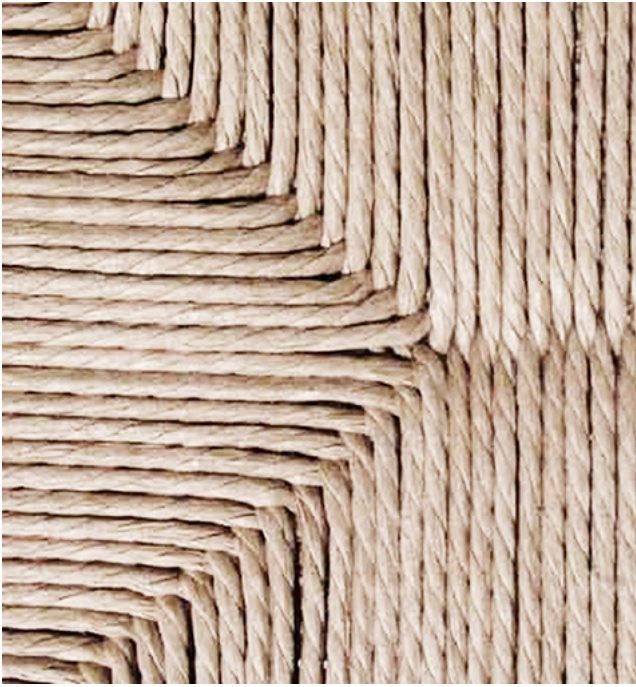


About Nano Laminate (Fenix 0717), sourced from the Italian company Fenix. A material known for its delicately matt, ultra-smooth surface. Nano Laminate has a self-repairing surface that "heals" minor scratches.

Webbing & Wicker

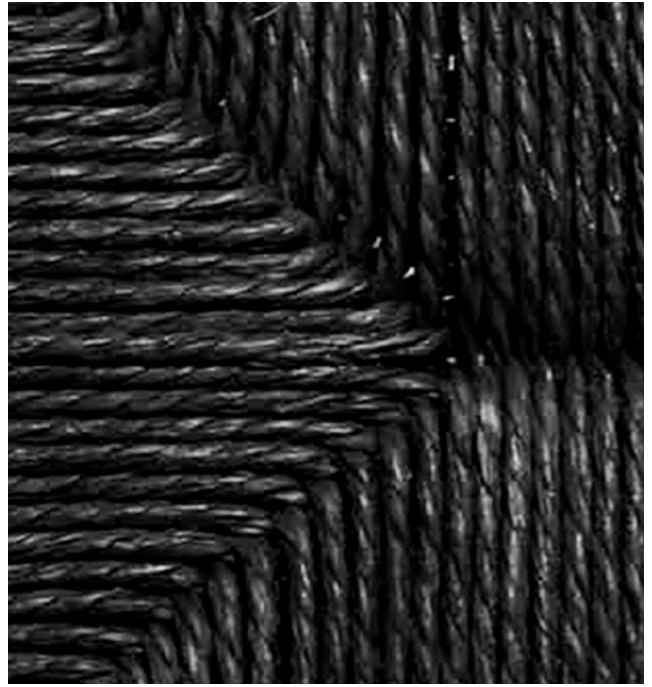


NATURAL PAPER CORD



About A durable, natural material that will patinate with grace. The paper cord has a wax treatment which lightly protects it against dirt.

BLACK PAPER CORD



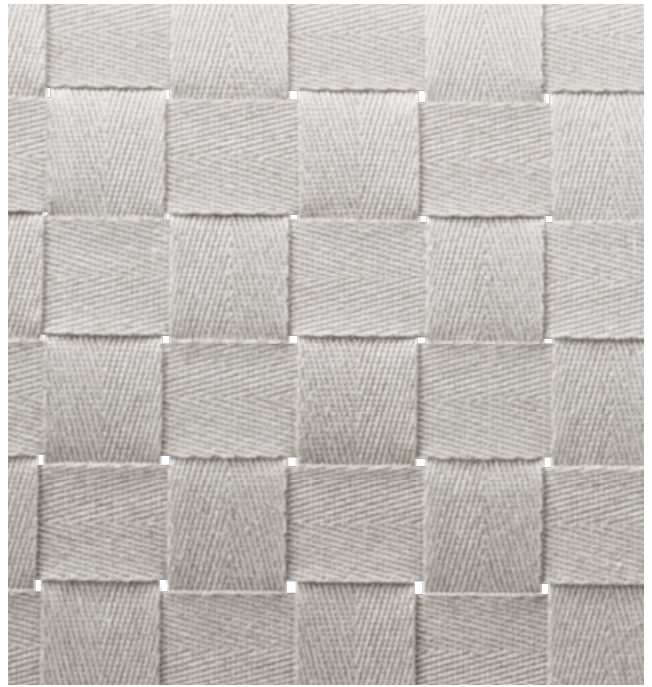
About A durable, natural material that will patinate with grace. The paper cord has a wax treatment which lightly protects it against dirt.

CANE WICKER



About Cane wicker is a delicate material made from cane cut from the smooth top surface of the cane. Fredericia uses cane of the highest quality available sourced from Japan and Indonesia. Furniture with cane wicker should not be placed directly at heating units such as fire places, radiators or in direct sunlight.

LINEN WEBBING



About Linen webbing has been used for furniture seats for centuries. It provides a lightweight chair and allows the body to ventilate when using the chair. The linen webbing is woven together with tight PP-strings in order to secure the stretch fastness over time.

Canvas

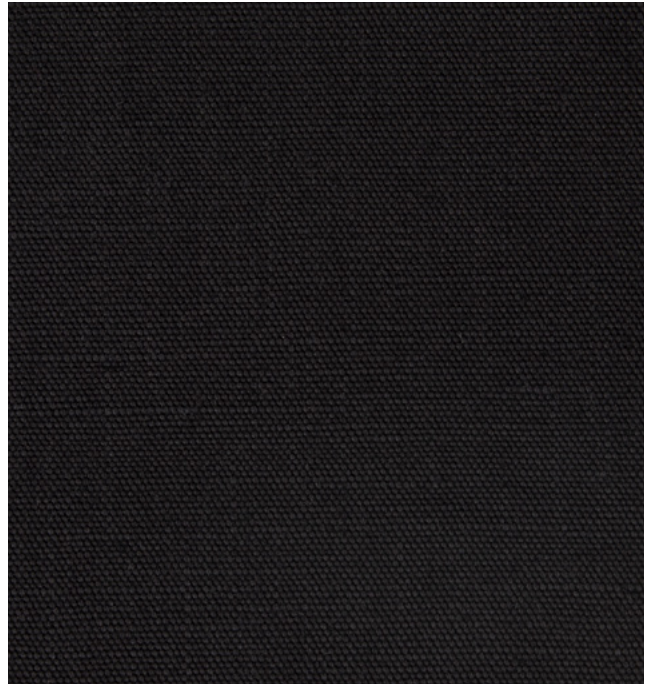


NATURAL CANVAS



About A classic and robust canvas made from 100% linen. While the canvas is pre-tretched to limit the process, the canvas will adjust to the user's body over time.

BLACK CANVAS



About A classic and robust canvas made from 100% linen. While the canvas is pre-tretched to limit the process, the canvas will adjust to the user's body over time.





Calmo Sofa by Hugo Passos. Fabric: Ruskin 10.

Tableau Coffee Table by Space Copenhagen

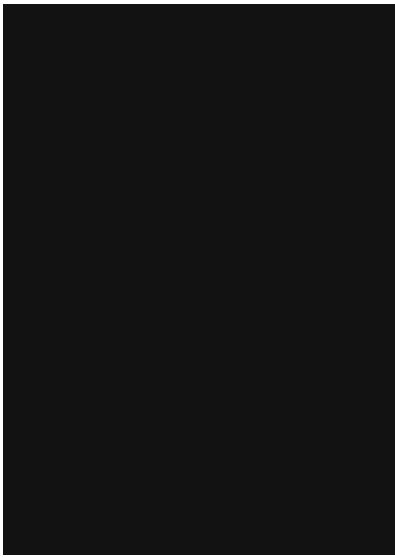
The Canvas Chair by Børge Mogensen. Fabric: Black Canvas.

Standard Colours

The Standard Colours are applied to coloured-through polypropylene (PP) in the collections Pato and Acme. Each standard colour is chosen to complement the Fredericia Colour Worlds, as well as the natural woods and leathers for which Fredericia is renowned.



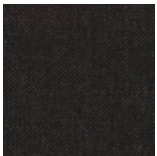
BLACK



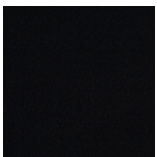
MATCH



Fame 60999

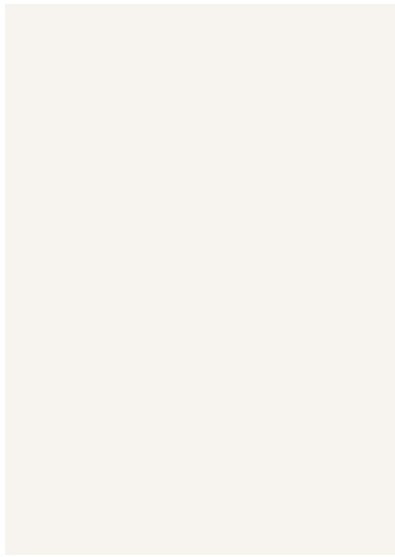


Re-wool 198



Vidar 1880

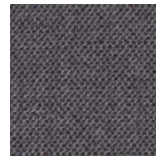
WHITE



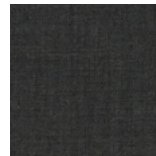
DARK GREY



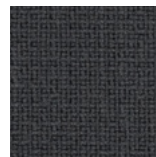
MATCH



Capture 4601



Remix 163



Fame 60019

QUARTZ GREY



MATCH



Capture 4401

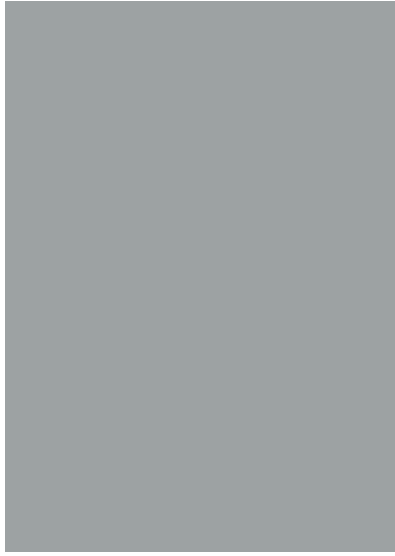


Remix 133



Vidar 152

STONE



MATCH



Capture 4101



Remix 123

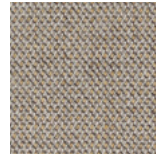


Vidar 133

SAND



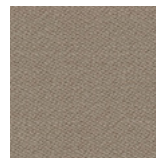
MATCH



Capture 5103

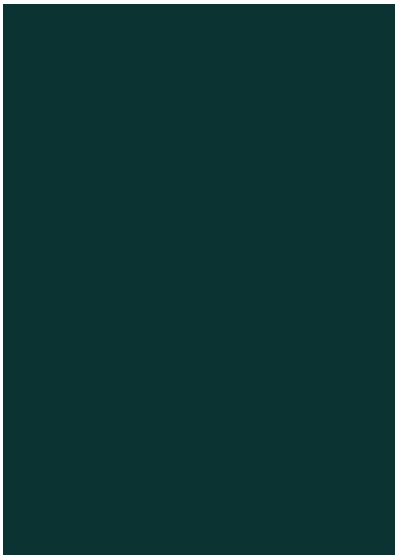


Remix 126



Vidar 222

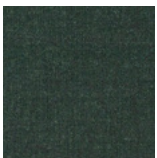
ANCIENT GREEN



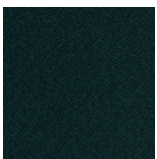
MATCH



Capture 7101

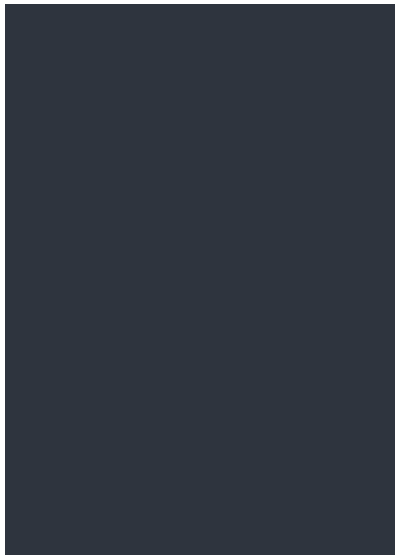


Remix 973

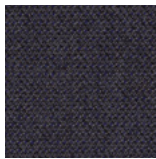


Vidar 1062

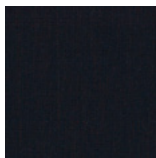
DARK BLUE



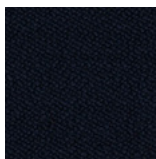
MATCH



Capture 5201



Remix 796

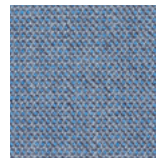


Vidar 554

STORM



MATCH



Capture 4902



Remix 733

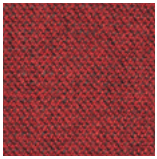


Vidar 733

DARK RED



MATCH



Capture 5402

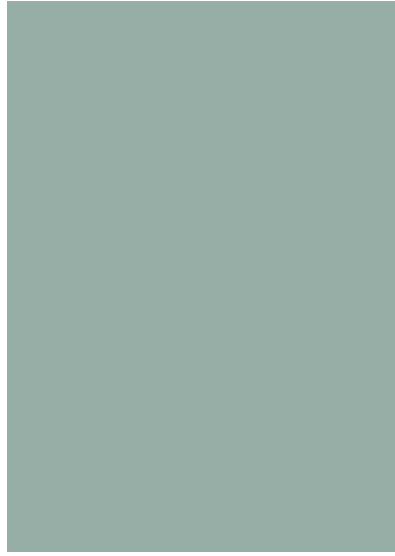


Remix 662

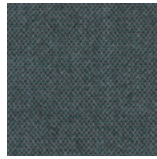


Fame 64167

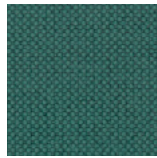
OCEAN



MATCH



Capture 6601

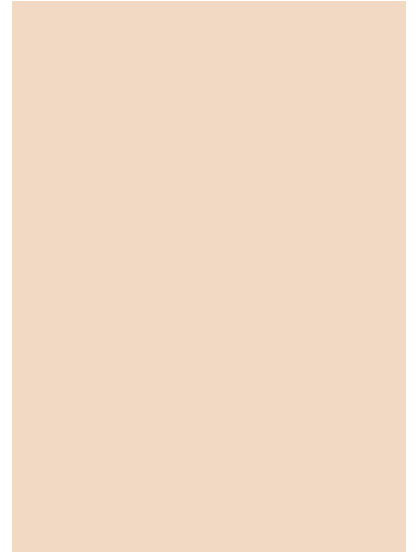


Merit 17

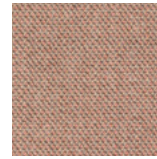


Re-wool 828

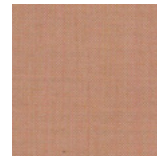
POWDER NUDE



MATCH



Capture 4803



Remix 406



Re-Wool 628

Contact



info@fredericia.com

+45 7592 3344

HQ, Sales & Production

Fredericia Furniture A/S, Treldevej 183, DK-7000 Fredericia
sales@fredericia.com

Marketing

Fredericia Furniture A/S, Løvstræde 1, 4. floor, DK-1152 Copenhagen
marketing@fredericia.com

Copenhagen Showroom

Løvstræde 1, 4. floor, DK-1152 Copenhagen

London Showroom

1 Dufferin Street, London EC1Y 8NA

Follow us

