

FRITZ HANSEN



**FRI™ - DESIGNER SELECTION
PRODUCT FACT SHEET**

FRI™ - DESIGNER SELECTION

Open, soft and simplicity itself - the lounge chair Fri™ was created by Jaime Hayon to represent exactly this. Fri is the Spanish designer's take on an extrovert chair, with the ambition of delivering a comfortable seat with a sculptural look, pleasing the body as well as the eye. Immerse in its curves, dive into its comfortability, and create an open space with a welcoming feel with Fri.

PRODUCT TYPE

Lounge chair

ENVIRONMENT

Indoor

DESIGNER/ YEAR OF DESIGN

Jaime Hayon, 2015

DESIGNER

Spanish artist-designer Jaime Hayon was born in Madrid in 1974. As a teenager, he submerged himself in skateboard culture and graffiti art, the foundation of the detailed, bold yet whimsical imagery so imminent in his work today.

After studying industrial design in Madrid and Paris he joined Fabrica in 1997, the Benetton-funded design and communication academy, working closely with the legendary image-maker and agitator Oliverio Toscani. In a short time he was promoted from student to head of their Design Department. Eight years later, Jaime broke out on his own, first with his collections of designer toys, ceramics and furniture, later followed by interior design and installations.

MODELS

JH4: Lounge chair
 JH14: Footstool

MATERIAL

Shell: The shell of the chair is created in hard polyurethane foam with glass fibre re-enforcement of the edges as with the Egg™ and the Swan™. The seat cushion for both the chair and the footstool is made of moulded polyurethane foam to achieve the right form and comfort. The back cushion on the chair is made of two slices of soft foam with a lumbar support to increase durability and comfort.

Bases: The base comes with four legs made of satin brushed aluminium. Each leg has mounted nylon glides, suitable for a majority of floors.

The footstool has a bottom plate made of MDF on which the seat cushion is mounted

Materials in %:

JH4 with upholstery and steel base:
 3,2% Wood
 12,3% Fabric
 21,4% Steel
 21,6% Aluminium
 41,6% PUR foam

JH14 with upholstery and steel base:

1,7% Steel
 6,6% Fabric
 14,9% PUR foam
 36,2% Plywood
 40,5% Aluminium

Items with a weight <1% of the total product weight are not included in the figures. The upholstery percentage may vary depending on the upholstery type.

BASE

The base is available in:

Satin brushed aluminium



UPHOLSTERY

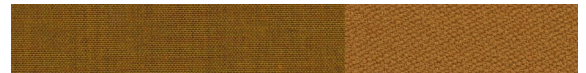
The upholstery for Fri™ - Designer Selection is available in the following textile combinations:

Atom White



Shell & Cushions: Atom O124

Burnt Yellow



Shell: Remix 422 / Cushions: Vidar 472

PRODUCTION PROCESS

Shell: The shell is made of hard polyurethane (PUR) foam with an embedded steel frame as well as glass fibre re-enforcement of the edges. The shell is additionally reinforced with a wood frame in the seat area. Remnants from foam production are granulated, wherever possible, for recycling.

Upholstery: The Fri™ chairs are available with upholstery. Several textiles are available with EU Ecolabel Flower mark.

Base: The bases are made of brushed aluminium steel. The legs are attached to the shell with screws. Production scrap (steel and aluminium) is collected for recycling.

Cushion: The seat cushion is made of moulded PUR foam and the back cushion is cut from plates of foam. A water-soluble glue is used for bonding of textile to the foam.

MADE-TO-ORDER

Non-standard configurations (special colours, upholstery etc.) are available upon request at a minimum order quantity.

TEST

- EN 16139 Test Level 2 (Non domestic seating)
For strength, durability and stability

CERTIFICATIONS

- Fri™ is GreenGuard Gold certified.

WEIGHT

JH4: 22,6 kg/ 49 lb
JH14: 1,2 kg/ 26 lb

COUNTRY OF ORIGIN

Poland

PRE-ASSEMBLED

Yes

PACKAGING

The chair/footstool is covered with a recycled plastic bag and shipped in a recycled cardboard box. All packaging material can be recycled.

CLEANING AND CARE

Find recommendations for cleaning and care at:
fritzhansen.com/maintenance

REPAIR, DISPOSAL AND REUSE

In the case of disposal, the lounge chair can be disassembled into different parts (shell, loose cushions and legs) for recycling, special handling and repair. The shell requires special handling because of the embedded veneer and steel frame. The foam in the loose cushions can be granulated and re-used. The legs and all other metal parts can be recycled. Check local regulations for recycling options and whether there is potential for reuse.

WARRANTY

Fritz Hansen provides a five-year warranty on standard products against defects in materials and workmanship.

An extended warranty of up to twenty years is provided on selected products provided they have been registered online on fritzhansen.com/my-fh

Standard (5 years):

Fabric, Cushions

Extended (10 years):

Base, Shell

On any material, fabric or leather, which is not listed in our price list on a specific product, the standard warranty is 2 years.

Additional warranty conditions can be found at:

fritzhansen.com/warranty

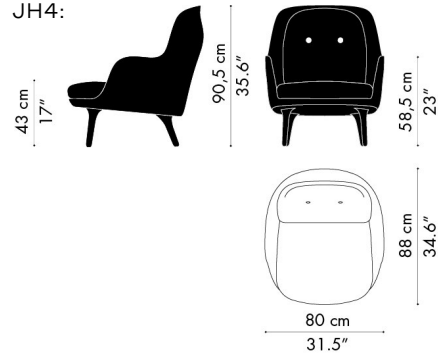
SPARE PARTS

Inquiries regarding spare parts can be sent to:

salessupport@fritzhansen.com

DIMENSIONS

JH4:



JH14:

